

GULF COAST ASSOCIATION OF GEOLOGICAL SOCIETIES

Transactions of the
32nd ANNUAL MEETING



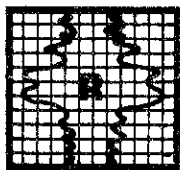
HOUSTON, TEXAS

OCTOBER 27, 28, 29, 1982

One of the oldest. One of the Best.

Ragsdale Well Logging was around when conventional mud logging was the only measurement at the well site. Now we also have the SPECTRA-GRAPH 2000 computerized logging system for total logging instrumentation of land and offshore oil & gas wells. High speed data transmissions, multiple rig site terminals and color graphics provide reliable, state-of-the-art well monitoring as sophisticated as today's energy industry. Could you expect less from a company that's been serving the oil patch 30 years?

For more information, please contact:
Jack H. Ragsdale, Jr.

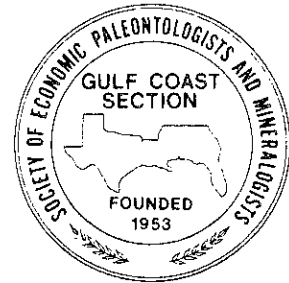
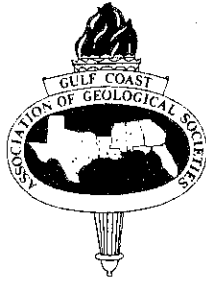


RAGSDALE
WELL LOGGING COMPANY

3801 Kirby, Suite 536 Houston, Texas 77098
(713) 526-7060

TRANSACTIONS GULF COAST ASSOCIATION OF GEOLOGICAL SOCIETIES

A SECTION OF THE AMERICAN ASSOCIATION OF PETROLEUM GEOLOGISTS



VOLUME XXXII, 1982

MORAD MALEK-ASLANI
Editor

PREPARED FOR THE
Thirty-second Annual Meeting of the
Gulf Coast Association of Geological Societies
AAPG REGIONAL MEETING
AND
The Twenty-ninth Annual Meeting of the
GULF COAST SECTION OF THE
SOCIETY OF ECONOMIC PALEONTOLOGISTS AND
MINERALOGISTS

JOHN E. KILGORE
SEPM Editor

DONALD K. CAMERON, JR.
Associate SEPM Editor

OCTOBER 27-28-29, 1982

Published at
Houston, Texas

TABLE OF CONTENTS

TITLE PAGE	I
DEDICATION TO Rufus J. Le Blanc, Sr.	V
OFFICERS AND EXECUTIVE COMMITTEE, GCAGS	VI
OFFICERS OF MEMBER SOCIETIES, GCAGS	VII
REPORT OF THE PRESIDENT, GCAGS, John J. Amoruso	IX
REPORT OF THE GENERAL CHAIRMAN, James O. Lewis	X
REPORT OF THE TRANSACTION EDITOR, Morad Malek-Aslani	X
REPORT OF THE PROGRAM CHAIRMAN, Paul M. Harris	X
ORGANIZATION, THIRTY-SECOND ANNUAL MEETINGS	XI
BEST PAPER AWARD, GCAGS, THIRTY-FIRST ANNUAL MEETING	XIII
CONSTITUTION AND BYLAWS, GCAGS	XV
PAST OFFICERS AND CONVENTION CHAIRMAN, GCAGS	XVII
HONORARY MEMBERS, GCAGS	
Don R. Boyd	XVIII
Jules Braunstein	XIX
Michel T. Halbouty	XIX
Frank W. Harrison, Jr.	XX
Lee Hilliard Meltzer	XX
Harold N. Hickey	XXI
DISTINGUISHED SERVICE AWARDS	
Robert E. Boyer	XXII
Paul Barkley Souders	XXII
Bill C. Tucker	XXIII
GCS-SEPM, OFFICERS, BUSINESS REPRESENTATIVES AND HONORARY MEMBERS	XXIV
REPORT OF THE PRESIDENT, GCS-SEPM, William P.S. Ventress	XXV
BEST PAPER AWARDS, GCS-SEPM, TWENTY-EIGHTH ANNUAL MEETING	XXVI
BYLAWS, GCS-SEPM	XXVIII
PAST OFFICERS, GCS-SEPM	XXXI
PUBLICATIONS OF GCAGS	XXXII
PUBLICATIONS OF GCS-SEPM	XXXIV
ADVERTISERS INDEX	598

TECHNICAL PAPERS AND ABSTRACTS GCAGS

THE BIG LOOK - THE FUTURE TREND OF EXPLORATION (Abstract) by W.C. Ramsey-Palmer and B.T. Fine	1
FUTURE ENERGY INVULNERABILITY by T.W. Rollins	3
DEPOSITIONAL ENVIRONMENTS OF THE NORPHLET FORMATION (JURASSIC) IN SOUTHWESTERN ALABAMA by F. Pepper	17
THE GRAY SANDS (JURASSIC) OF TERRYVILLE FIELD, LINCOLN PARISH, LOUISIANA: MODEL FOR HYDROCARBON EXPLORATION by P.C. Judice and S.L. Mazzullo	23
JURASSIC PETROLEUM GEOLOGY OF SOUTHWESTERN CLARK COUNTY, MISSISSIPPI by J.B. Jackson and P.M. Harris	45
DEPOSITIONAL ENVIRONMENT OF JURASSIC SMACKOVER SANDSTONE, THOMASVILLE FIELD, RANKIN COUNTY, MISSISSIPPI by R.S. Olsen	59
PETROLOGY AND RESERVOIR CHARACTERISTICS OF THE SMACKOVER FORMATION, HATTER'S POND FIELD: IMPLICATIONS FOR SMACKOVER EXPLORATION IN SOUTHWESTERN ALABAMA by D.J. Benson and E.A. Mancini	67
GEOLOGY AND LOG STUDY OF TIGHT GAS SANDSTONES: COTTON VALLEY GROUP by G. Pirie	77
CATAHOULA CREEK FIELD, A COMPLEX STRUCTURAL AND STRATIGRAPHIC TRAP IN DOWNDIP COTTON VALLEY SANDS (Abstract): by T. Sanness and D. Hancock	89
FACIES ANALYSIS OF THE CRETACEOUS HENSEL FORMATION, RESPONSE OF A FLUVIAL TO A MARINE TRANSGRESSION by J. Payne and A.J. Scott	91
EVOLUTION AND POROSITY OF CARBONATE SHOALING CYCLES, LOWER CRETACEOUS- LOWER GLEN ROSE, SOUTH TEXAS by A.R. Bay	101

CONTRASTING DEPOSITIONAL PROCESSES OF SUB-CLARKSVILLE AND WOODBINE RESERVOIR SANDSTONES, GRIMES COUNTY, TEXAS by R.A. Barton	121
LATE CRETACEOUS VOLCANISM IN SOUTH AND CENTRAL TEXAS - STRATIGRAPHIC STRUCTURAL, AND SEISMIC MODEL by T.E. Ewing and S.C. Caran	137
COMPOSITION AND DIAGENESIS OF THE UPPER CRETACEOUS SAN MIGUEL SANDSTONE, NORTHERN WEBB COUNTY, TEXAS by A.D. Jacka	147
BASEMENT STRUCTURE IN NORTHWEST PENINSULAR FLORIDA by N.M. Coleman and M.T. Stewart	153
OUACHITA OROGENIC COMPLEX CENTRAL TEXAS - GEOPHYSICAL MEASUREMENTS AND BASEMENT OFFSET by H.C. Clark	157
THE USE OF HIGH ALTITUDE INFRA-RED IMAGERY IN STRUCTURAL MAPPING OF MONUMENT SPRINGS AREA, WEST-CENTRAL MARATHON UPLIFT, BREWSTER COUNTY, TEXAS (Abstract) by W.D. Tomlinson	164
REGIONAL TECTONIC EVOLUTION OF TRANS-PECOS TEXAS by T.M. Shepard and J.L. Walper	165
LITHOFACIES AND DEPOSITIONAL ENVIRONMENTS OF MIDDLE ORDOVICIAN SHELF CARBONATES IN SOUTHERN APPALACHIANS by A. Lee	173
CHAPPEL (MISSISSIPPIAN) BIOHERMAL RESERVOIR FACIES IN THE HARDEMAN BASIN, TEXAS by W.M. Ahr and S.L. Ross	185
SADDLE CRYSTAL DOLOMITES AS FRACTURED RESERVOIR INDICATORS, MISSISSIPPIAN BIOHERMAL FACIES, HARDEMAN COUNTY, TEXAS by W.M. Ahr	195
STRATIGRAPHIC DISTRIBUTION OF HYDROCARBONS WITH DIFFERING API GRAVITIES IN THE EAST TEXAS BASIN by R. Conti	199
GULF COAST MAGIC by W.H. Roberts, III	205
DEPOSITIONAL ENVIRONMENT OF CARTER SANDSTONE (CHESTERIAN) OF THE BLACK WARRIOR BASIN IN NORTHWESTERN ALABAMA AND NORTHERN MISSISSIPPI, (Abstract) by B. Shepard	217
HYDROTHERMAL MINERALIZATION WITHIN THE BALCONES AND LULING FAULT ZONE OF TEXAS (Abstract) by S.C. Caran	218
FIELD SIZE DISTRIBUTIONS AND EXPLORATION EFFICIENCY BY DEPTH ZONES IN THE GULF COAST AREA (Abstract) by G.C. Grender and L.A. Rapoport	219
PRELIMINARY ASSESSMENT OF LOUISIANA'S URANIUM POTENTIAL by R.P. McCulloh	221
MONITORING LOCAL SUBSIDENCE IN AREAS OF GEOPRESSURE FLUID WITHDRAWAL, SOUTHWESTERN LOUISIANA by D.B. Trahan	231
REACTIVATION OF FAULT MOVEMENT, TEPETATE FAULT ZONE, SOUTH CENTRAL LOUISIANA by J.S. Hanor	237
SMECTITE-ILLITE TRANSFORMATION AND DEVELOPMENT OF ABNORMAL FLUID PRESSURE AND STRUCTURE IN THE NORTHERN GULF OF MEXICO BASIN (Abstract) by C.H. Bruce	246
ABNORMAL PRESSURES IN THE LOWER VICKSBURG, McALLEN RANCH FIELD, SOUTH TEXAS by R.R. Berg and M.F. Habeck	247
EFFECT OF SYNDEPOSITIONAL STRUCTURES ON LOWER VICKSBURG (OLIGOCENE), FLUVIAL-DELTAIC SEDIMENTATION, McALLEN RANCH FIELD AREA, HIDALGO COUNTY, SOUTH TEXAS (Abstract) by J.H. Han and A.J. Scott	254
PRODUCTIVE LOWER WILCOX STRATIGRAPHIC TRAPS FROM AN ENTRENCHED VALLEY IN KINKLER FIELD, LAVACA COUNTY, TEXAS by S. Chuber and R.L. Begeman	255
GEOMETRY AND MECHANISM OF FOLDING RELATED TO GROWTH FAULTING IN NORDHEIM AREA (WILCOX), DEWITT COUNTY, TEXAS by L.T. Billingsley	263
PREDICTION OF DEEP RESERVOIR FACIES by G. Shanmugam and R.J. Moiola	275
TOWARDS A BETTER UNDERSTANDING OF GULF COAST MIOCENE DEEP WATER SEDIMENTS by B.E. Lock	283

**TECHNICAL PAPERS AND ABSTRACTS
GULF COAST SECTION OF SEPM**

PALEOCENE-EOCENE BOUNDARY IN THE EASTERN GULF COAST by Norman O. Fredericksen, Thomas G. Gibson, and Laurel M. Bybell	289
LATE EOCENE TO EARLY OLIGOCENE CALCAREOUS NANNOFOSSILS IN ALABAMA AND MISSISSIPPI by Laurel M. Bybell	295
LITHOSTRATIGRAPHY AND BIOSTRATIGRAPHY OF UPPER EOCENE AND LOWER OLIGOCENE STRATA IN SOUTHWEST ALABAMA AND SOUTHEAST MISSISSIPPI by Laura A. Waters and Ernest A. Mancini	303
COMPARISON OF RADIOLARIAN THANATOCOENOSIS AND BIOCOENOSIS FROM THE OLIGOTROPHIC GULF OF MEXICO AND CARIBBEAN, AND THE EUTROPHIC SOUTHERN CALIFORNIA SEA by Cynthia R. Wigley	309
POLYCYSTINE RADIOLARIAN DISTRIBUTIONS AND ENHANCEMENTS RELATED TO OCEANOGRAPHIC CONDITIONS IN A HYPOTHETICAL OCEAN by Richard E. Casey, Joan M. Spaw, and Florence R. Kunze	319
PALEOECOLOGY OF MISSISSIPPI RIVER MUDLUMPS: STATISTICAL ANALYSIS OF A FORAMINIFERAL ASSEMBLAGE by Robert T. Verrastro	333
MODERN BENTHIC FORAMINIFERA FROM THE BYRE INTRASLOPE BASIN, GULF OF MEXICO by Leslie A. Reynolds	341
MODERN THECAMOEBINIDS (ARCELLINIDA) FROM THE BALIZE DELTA, LOUISIANA by Drew Haman	353
RECENT FORAMINIFERA AROUND PETROLEUM PRODUCTION PLATFORMS ON THE SOUTHWEST LOUISIANA SHELF by Jo Ann Locklin and Rosalie F. Maddocks	377
MIS-INTERPRETATION OF ENVIRONMENTAL MONITORING DATA— A PLAGUE ON MANKIND! by Wayne C. Isphording	399
REGIONAL JURASSIC LITHOSTRATIGRAPHY OF ALABAMA (Abstract) by Janyth S. Tolson	412
EXPLORATION ANALYSIS OF THE JURASSIC APALACHICOLA EMBAYMENT OF FLORIDA by Hugh J. Mitchell-Tapping	413
CENOZOIC SHELF MARGINS, NORTHWESTERN GULF OF MEXICO by Charles D. Winker	427
PALEOCENE TO MIDDLE EOCENE STRATIGRAPHY OF ALABAMA by Thomas G. Gibson, Ernest A. Mancini, and Laurel M. Bybell	449
CLAY MINERALOGY AND DEPOSITIONAL HISTORY OF THE FRIO FORMATION IN TWO GEOPRESSURED WELLS, BRAZORIA COUNTY, TEXAS by Robert L. Freed	459
IMPLICATIONS OF FISSION TRACK AGES FROM THE KAPLAN GEOTHERMAL-GEOPRESSURE ZONE, VERMILLION PARISH, LOUISIANA by Roy K. Dokka	465
POTASSIUM-ARGON AGE DATING OF INTERLAYERED GLAUCONITES FROM THE EOCENE QUEEN CITY FORMATION, EAST TEXAS by Candyce L. Beck and John A.S. Adams	469
UPPER JURASSIC-LOWER CRETACEOUS FAN-DELTA COMPLEX: LA CASITA FORMATION OF THE SALTILLO AREA, COAHUILA, MEXICO by K.S. Fortunato and W.C. Ward	473
AN ECOSTRATIGRAPHIC MODEL FOR SHELF PLATFORM DEVELOPMENT OF MIDDLE CRETACEOUS (STUART CITY) LIMESTONES OF SOUTH CENTRAL TEXAS by N.J. Tartamella	483
DEPOSITIONAL ENVIRONMENTS AND GAS PRODUCTION TRENDS OLMOS SANDSTONE, UPPER CRETACEOUS, WEBB COUNTY, TEXAS by John W. Snedden and David G. Kersey	497
FORMATION OF THE MISSISSIPPI CANYON (Abstract) by J.M. Coleman and D.B. Prior	519
DEPOSITIONAL AND STRATIFICATION OF OBLIQUE DUNES SOUTH PADRE ISLAND, TEXAS by Stephen Paul Weiner	521
ELEMENTS OF HIGH CONSTRUCTIVE DELTAIC SEDIMENTATION, LOWER FRIO FORMATION, BRAZORIA COUNTY, TEXAS By Noel Tyler and Jong H. Han	527
GRAIN SHAPE ANALYSIS: APPLICATION TO PROBLEMS OF SEDIMENT SOURCE AND TRANSPORT by Jim Mazzullo	541
DETAILED GRAIN SIZE AND HEAVY MINERALOGY OF SANDS OF THE NORTHEASTERN TEXAS GULF COAST: IMPLICATIONS WITH REGARD TO COASTAL BARRIER DEVELOPMENT by Mary Lou Cole and John B. Anderson	555
DETERMINATION OF DEPOSITIONAL ENVIRONMENTS OF SAND BODIES USING VERTICAL GRAIN-SIZE PROGRESSIONS by John B. Anderson, Carl Wolfteich, Robyn Wright, and Mary Lou Cole	565
USING NANNOFOSSIL COUNTS IN THE INTERPRETATION OF SUBSURFACE DELTAS Robert W. Everett, Jr.	579

DEDICATION

1982 GCAGS Transactions Volume

To



RUFUS J. LE BLANC, SR.

The *Transactions* of the 1982 GCAG's convention is dedicated to Rufus J. LeBlanc, Sr. in recognition of his outstanding contribution to the geological profession as a researcher, educator, manager and petroleum explorationist.

Born in 1917 and raised in the bayou country of Erath, Louisiana, Ruf graduated from Erath High School and then went to Louisiana State University where he received a bachelor's degree in 1939 and a master's degree in 1941, both in geology. It was at LSU that Rufus developed his life-long interest in Gulf Coast stratigraphy and sedimentation, under the dynamic influence of Dr. Harold Fisk.

Upon graduation from L.S.U., LeBlanc's first professional job was with Dr. Fisk working on the geology of the Mississippi river alluvial and deltaic deposits for the Mississippi River Commission. Seven years later, Ruf was invited to join Shell Oil's Exploration and Production Research Division in Houston to organize a research team to study Holocene clastic sediments. Many of the fundamental concepts for understanding Holocene and ancient alluvial, deltaic, coastal barrier, transgressive and marine sediments were established by LeBlanc, the late Hugh A. Bernard and his co-workers at Shell during the period 1950-1965.

In 1953, LeBlanc was appointed Manager of Shell Oil's Geologic Research Department. In this capacity, Rufus organized and managed an expanded research effort on clastic and carbonate stratigraphy and sedimentation. He led a group of over fifty scientists and researchers, many of whom he hired personally.

An operations assignment in one of Shell's Gulf Coast divisions gave Ruf the opportunity to apply his research knowledge directly in the search for hydrocarbons in the Gulf Basin. In 1965 Rufus returned to Shell's Bellaire Research Center to prepare and teach courses on clastic sedimentation and stratigraphy. It is in this assignment that Rufus made his most important contribution to Shell and the geological profession. His unique and inspiring lectures and field courses, within Shell and the industry and universities have contributed to the education and advancement of literally thousands of geologists, geophysicists and engineers.

Rufus has been very active also in his profession. He has presented over 40 technical papers and numerous field trips during the past forty years. He has been a member of the AAPG since 1946 and was chairman of the Research Committee in 1955, Chairman of the Convention Printing Committee — Houston, 1971, and has been an Associate Editor (Sandstone Reservoirs) for several years. He received the *President's Award* in 1974 for the best paper published by the AAPG and has received several Certificates of Merit during past years. Rufus served as Vice President of the Houston Geological Society in 1969-1970 and was on the Executive Committee during 1972-1974. The H.G.S. Lifetime Honorary Membership was awarded him in 1974. He also received an Honorary Membership from SEPM in June, 1980. He has been co-editor of SEPM Publication number 5 entitled "Regional Aspects of Carbonate Deposition — a Symposium". He was elected a fellow of the G.S.A. in 1956.

In June 1981 the AAPG honored LeBlanc's outstanding contributions to the geological profession by awarding him Honorary Life Membership.

Ruf's record in the geological profession is impressive, as is the man himself. He is a devoted husband and father. His wonderful wife, Bede, is the strength behind this great geologist and man.

The GCAGS is honored to recognize Rufus J. LeBlanc for his more than 40 years of service, dedication and technical contributions. This quietly modest man with an incredible sense of humor has made an immeasurable contribution to his profession and colleagues through his research and teaching.

Robert M. Sneider

GULF COAST ASSOCIATION OF GEOLOGICAL SOCIETIES

PRESIDENT	John J. Amoruso Amoruso Petroleum Co. Houston, Texas
VICE-PRESIDENT	Sarah C. Childress Latham Exploration Co. Jackson, Mississippi
SECRETARY	Clyde G. Beckwith Conoco Inc., Houston, Texas
TREASURER	Chester A. Baird Dow Chemical USA, Houston, Texas

EXECUTIVE COMMITTEE

ALABAMA GEOLOGICAL SOCIETY	Samuel W. Shannon Alabama Water Improvement Commission, University, Alabama
AUSTIN GEOLOGICAL SOCIETY	Clark R. Wilson The University of Texas at Austin, Texas
BATON ROUGE GEOLOGICAL SOCIETY	David E. Pope Louisiana Geological Survey, Baton Rouge, Louisiana
CORPUS CHRISTI GEOLOGICAL SOCIETY	Ray Govett Independent, Corpus Christi, Texas
EAST TEXAS GEOLOGICAL SOCIETY	Paul Goodgame Paul Goodgame Associates, Tyler, Texas
HOUSTON GEOLOGICAL SOCIETY	William F. Bishop Tenneco, Houston, Texas
LAFAYETTE GEOLOGICAL SOCIETY	R.J. Bell Sun Exploration & Production Co., Lafayette, Louisiana
MISSISSIPPI GEOLOGICAL SOCIETY	John C. Marble Forest Oil Corp., Jackson, Mississippi
NEW ORLEANS GEOLOGICAL SOCIETY	Charles J. Corona Consultant, New Orleans, Louisiana
SHREVEPORT GEOLOGICAL SOCIETY	Charles S. Cook Shreveport Exploration Co., Shreveport, Louisiana
SOUTHEASTERN GEOLOGICAL SOCIETY	Ron Cyerak Suwannee River Water Management Dist., Live Oak, Florida
SAN ANTONIO GEOLOGICAL SOCIETY	Jack Richards Bright and Company, San Antonio, Texas

OFFICERS OF MEMBER SOCIETIES GULF COAST ASSOCIATION OF GEOLOGICAL SOCIETIES

ALABAMA GEOLOGICAL SOCIETY, P.O. Box 6184, University, Alabama 35486

PRESIDENT Samuel W. Shannon; Alabama Water Improvement Commission
 VICE-PRESIDENT Karen F. Rheams; Geological Survey of Alabama
 SECRETARY Charles W. Copeland; Geological Survey of Alabama
 TREASURER Michael W. Szabo; Geological Survey of Alabama

AUSTIN GEOLOGICAL SOCIETY, P.O. Box 1302, Austin, Texas 78767

PRESIDENT Clark R. Wilson; The University of Texas at Austin
 VICE-PRESIDENT Robert Bluntzer; Texas Department of Water Resources
 SECRETARY Ken Owens; Geotronics, Inc.
 TREASURER Missy Jackson; Bureau of Economic Geology

BATON ROUGE GEOLOGICAL SOCIETY, P.O. Box 19151, Baton Rouge, Louisiana 70893

PRESIDENT John W. Eggers; Louisiana Office of Mineral Resources
 SECRETARY Leonard H. Guileau; Louisiana Department of Trans. & Devel.
 TREASURER Richard H. Kesel; L.S.U.
 PAST PRESIDENT Rod E. Emmer; Coastal Environments, Inc.

CORPUS CHRISTI GEOLOGICAL SOCIETY, P.O. Box 1068, Corpus Christi, Texas 78403

PRESIDENT Ray Govett; Independent
 1ST VICE PRESIDENT Craig Anderson; Dinero Oil Co.
 2ND VICE-PRESIDENT Bob Espeseth; Hamilton Brothers Oil Company
 SECRETARY Bob Rice; Edwin L. Cox & Berry R. Cox
 TREASURER Duncan Chisholm; Hamilton Brothers Oil Company

EAST TEXAS GEOLOGICAL SOCIETY, P.O. BOX 216, Tyler, Texas 75701

PRESIDENT Pau. Goodgame; Paul Goodgame Associates
 VICE-PRESIDENT Chris H. Reed; Consultant
 PAST PRESIDENT John P. Carr; Sunnybrook Oil & Gas, Inc.
 SECRETARY/TREASURER Mark W. Presley; Delta Drilling Company

HOUSTON GEOLOGICAL SOCIETY, 6916 Ashcroft, Houston, Texas 77081

PRESIDENT Peggy Rice; Conoco Inc.
 VICE-PRESIDENT Gerald Cooley; Phillips Petroleum Company
 PRESIDENT ELECT Matthew W. Doura; Transcontinental Gas Pipeline Corp.
 SECRETARY Joan E. Carlson; Cashco Oil Company
 TREASURER Donald R. Scherer; Weaver Oil & Gas Corp.

LAFAYETTE GEOLOGICAL SOCIETY, P.O. Box 51896, Lafayette, Louisiana 70501

PRESIDENT R.J. Bell; Sun Exploration & Production Co.
 1ST VICE-PRESIDENT Frank Vincent; Independent
 2ND VICE-PRESIDENT Mike McWilliams; Target Exploration
 SECRETARY Carol Pendergast; Lamson Onshore
 TREASURER Owen Scott; Lyons Petroleum
 DIRECTOR Brian Lock; U.S.L.
 DIRECTOR M.H. Oaks
 DIRECTOR William Robins

MISSISSIPPI GEOLOGICAL SOCIETY, P.O. Box 422, Jackson, Mississippi 39205

PRESIDENT James W. Twiner; Petroleum Resources, Inc.
1ST VICE-PRESIDENT Charles H. Williams; Mid-Continent Oil & Gas Associates
2ND VICE-PRESIDENT C. Kipp Ferns; ANR Production Company
SECRETARY Frank Johnson; Adams Exploration Company
TREASURER Richard Ingram; Consultant

NEW ORLEANS GEOLOGICAL SOCIETY, P.O. Box 52172, New Orleans, 70152

PRESIDENT Charles J. Corona; Consultant
VICE-PRESIDENT George Hasseltine; SNG
SECRETARY Alfred Baker, Jr.; McMoran
TREASURER D.A. Kemmer; Shell
PRESIDENT-ELECT Duncan Goldthwaite; Chevron

SHREVEPORT GEOLOGICAL SOCIETY, P.O. Box 750, Shreveport, Louisiana 71162

PRESIDENT Charles S. Cook; Shreveport Exploration Company
1ST VICE-PRESIDENT Percy J. Wheeler; Wheeler and Associates
2ND VICE-PRESIDENT David Hart
SECRETARY Robert E. Osborne, II; Palmer Petroleum
TREASURER James L. Brown, Jr., Kisatchie Resources
PAST PRESIDENT Nolan G. Shaw; Centenary College

SOUTHEASTERN GEOLOGY SOCIETY, P.O. Box 1634, Tallahassee, Florida 32302

PRESIDENT Ron Cyerak; Suwannee River Water Management Dist.
VICE-PRESIDENT Douglas Smith; University of Florida
SECRETARY/TREASURER Leslie Bell; Department of Environmental Regulation
MEMBERSHIP SECRETARY Richard Deuerling; Department of Environmental Regulation

SOUTH TEXAS GEOLOGICAL SOCIETY, B-100, Petroleum Center, San Antonio, Texas 78209

PRESIDENT Jack Richards; Bright and Company
VICE-PRESIDENT Bonnie Weise; Placid Oil Corporation
SECRETARY Jim Berry; Berry Exploration
TREASURER Ray Jones; Tesoro Petroleum Company
EXECUTIVE COMMITTEE Herb Davis; Independent
Tom Chaney; Independent

REPORT OF THE PRESIDENT GULF COAST ASSOCIATION OF GEOLOGICAL SOCIETIES



John J. Amoruso

The Houston Geological Society is proud to host this 32nd Annual Meeting of the Gulf Coast Association of Geological Societies, another in the long and successful series of conventions which began in 1950 to promote the understanding of Gulf Coast geology and advance petroleum geology. Since its beginning, GCAGS has grown in size and stature until it now has 12 member societies with an informal membership numbering over, 9,200 geologists. GCAGS operates with a minimum of bureaucracy and a maximum of personal initiative. Hundreds of geologists throughout the Gulf Coast province have enthusiastically given of their time, expertise and energy to guarantee the success of GCAGS projects. This dedication has been instrumental in making the GCAGS the largest section of the American Association of Petroleum Geologists, second to none in prestige and scope of activities.

The 1981 GCAGS convention in Corpus Christi was a resounding success and our congratulations and thanks are extended to Past President Paul M. Strunk, Convention Chairman Wilson Humphrey and all their committee chairmen and members for an excellent meeting. A Supplement to the Transactions was published after the convention to include those SEPM papers which could not be accommodated in the main body of the Transactions because of size limitations.

Over the last year, 1982 Convention Chairman James O. Lewis, his able committee chairmen, and the many committee members have been working to provide us all with another excellent convention in Houston. The convention workers have done their work well, and we can now enjoy the results of their labors. On behalf of the entire membership, I thank each and every one of them.

GCAGS committees have been very active in carrying out the business of the Association. I am happy to report that we are financially sound. This year Clyde E. Harrison was appointed as Chairman of the Financial Committee which manages the Association's funds, succeeding Bill C. Tucker, who served with distinction in that capacity for many years.

Our Publications Committee, under the direction of Robert E. Boyer, is functioning very well. GCAGS publications are sold through Earth Enterprises — GCAGS in Austin, a situation which permits efficient handling of all sales on a continuing basis. We have authorized the printing of a new Comprehensive Index of GCAGS Transactions to update the first index published in 1966. Volume Four of the Bibliography of Gulf Coast Geology was ready for sale in March 1982 and Readings in Gulf Coast Geology, Volume Three was authorized for publication.

The Student Aid Committee, with Edward C. Roy, Jr., as Chairman, assembled an excellent list of students whose work warranted recognition by GCAGS. The funding was raised to \$15,000 for this project, a rise of \$5,000 over last year.

The Executive Committee approved the recommendations of M.O. Turner, Awards and Honors Committee Chairman, and established the format for the new Honorary Membership and Distinguished Service Awards which will serve as a facility for recognizing the contributions of deserving members. GCAGS has been long overdue in establishing awards to show the Association's appreciation to those who have done so much. The first awardees are listed separately in this volume. Congratulations to all of them.

It is not practical to discuss all of the GCAGS projects in this short space, but suffice it to say that GCAGS has been very active. I especially want to thank the Executive Committee for their help and support over the last year. Vice President Sarah C. Childress, Secretary Clyde G. Beckwith, and Treasurer Chester A. Baird, have made working on the Executive Committee most enjoyable. Past President and Long Range Planning Committee Chairman Paul M. Strunk has been particularly helpful to me and M.O. Turner and has done an invaluable service in establishing the awards procedure and in serving as GCAGS representative to the AAPG Advisory Committee. To all those who have helped GCAGS during the past year, I extend my personal thanks. Your help and cooperation has made my job an honor and a real pleasure.

John J. Amoruso
President
Gulf Coast Association of
Geological Societies

REPORT OF THE GENERAL CHAIRMAN THIRTY-SECOND ANNUAL MEETING-1981

James O. Lewis

The Houston Geological Society welcomes the Gulf Coast Association of Geological Societies for the fifth time. Each time the number of delegates registering has grown. The Program has attracted pertinent papers with presentations becoming better each time. The entertainment portion has increased until today the budget for the Icebreaker is greater than the entire convention budget of 1973.

This is all possible due to the dedication and hard work of the Committee Chairmen and members of their committees. They are the ones responsible for the preparation and activities of the convention. To these hard working members of the Houston Geological Society goes the credit for another successful GCAGS Convention.

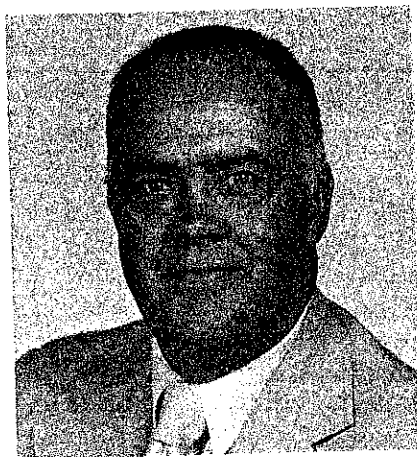


REPORT OF PROGRAM CHAIRMAN

Paul M. Harris

The chairman of the Technical Program Committee has an interesting task — developing and filling technical sessions that are of interest to a wide range of Gulf Coast Explorationists. My responsibilities were lightened with help from many sources: J.O. Lewis and M. Malek-Aslani cooperated closely throughout; D.L. Stoudt and E.L. Stoudt reviewed abstracts; S.O. Sears organized the speakers' breakfasts; and S.A. Longacre and E.L. Stoudt planned the Tobin Theater. Finally the response of our authors made the whole effort worthwhile.

Paul M. Harris
Program Chairman



REPORT OF THE TRANSACTIONS EDITOR

Morad Malek-Aslani

The theme of the 1982 GCAGS-GCS-SEPM convention in Houston is "Exploration in Eighties A Team Effort." The search for the remaining reserves of hydrocarbons, indeed, requires an interaction between various disciplines, a spirit reflected in our 1982 *Transactions*.

At the outset, I would like to compliment all the contributors to the *Transactions* which made this publication possible.

My editorial staff: Richard Barnett, Joel Gevirtz, George Kronman, Norm Rosen, Neil Samuels and Victor Van Beuren made my job so much easier. Without their help the editorial task would have been a nightmare. I am thankful for their help.

Mitch Harris, the program chairman for the GCAGS, and Jack Colle, program chairman for SEPM, aggressively solicited papers for the transactions. It was certainly fun to work with Mitch and Jack.

John Kilgore, the editor of the SEPM, coordinated his editorial efforts with mine, which made my job so much easier. Thank you, John.

I gratefully acknowledge the Tenneco Oil Co. E & P for absorbing the cost of long distance calls and mailing expenses. Linda Johnson, Tenneco Oil Co., E & P, helped me with the secretarial tasks for which I am thankful.

Last, but not least, Bob Pace, chairman of the printing committee, and Mona Grimmer of D. Armstrong Publishing Company made the production efforts a success.

Finally, I would like to thank the GCAGS for putting their faith in me as the editor.

Morad Malek—Aslani
Editor



ORGANIZATION

1982 CONVENTION COMMITTEES

THIRTY-SECOND ANNUAL MEETING

James O. Lewis — General Chairman; Retama Oil Corporation
Roy Worrell — Vice-Chairman; Gulf Oil

ADVERTISING COMMITTEE

Kay Stafford, Petroleum Information, Chairman
Jim DeChant, Valero Energy Corporation
Dr. Bill Frank, Mesa Petroleum Co.
Jeff Porter, Ragsdale Well Logging Co.

ARRANGEMENTS COMMITTEE

Mac Newby, Pilgrim Exploration Corp., Chairman
Michael F. Erpenbeck, Pilgrim Exploration Corporation
J.P. Laux, Mid-American Petroleum Inc.
Daniel G. Markey, Energy Reserves Group

ATHLETIC EVENTS COMMITTEE

Stewart Chuber, Consultant, Chairman
Cyrus "Cy" Strong, Shell Oil Co., Cross-Country Run
Jeffery V. Morris, Transco Gas Pipeline Co., Golf
Douglas J. Knab, Independent, Racketball-Handball
William F. Howell, Independent, Tennis
Elgean C. Shield, Anschutz Corp., Tennis

AUDIO-VISUAL COMMITTEE

Jerry A. Watson, Consultant, Chairman
Cliff Budd, MCOR Oil Development, Inc.
Dave Engel, W.L. Tidwell & Associates, Inc.
Dave Fontaine, Independent
Ben Lyles, ENI Exploration Co.

AWARDS COMMITTEE

Earl J. Ritchie, Williams Exploration Co., Chairman
George M. Greene, Monarch Energy Corp.
Charles E. Heare, Monsanto Co.
A.T. McCarroll, Santa Fe Energy Co.

EDITORIAL COMMITTEE

Morad Malek-Aslani, Tenneco Oil Co., Chairman
Richard Barnett, Enstar Petroleum
Joel Gevirtz, Tenneco Oil E & P
George Kronman, Amoco Production Company
Norm Rosen, Robertson Research
Neil Samuels, Amoco Production Company
Victor Van Beuren, Arco

ENTERTAINMENT COMMITTEE

Howard & Ada Kiatta, Independent, Chairmen
Bill & Carmen Bagby, Independent
Tiney & Evelyn Carroll, The Analysts
Jerry & Nansi-Lee Clark, C & F Petroleum, Inc.
Jim & Glenna Floyd, Seagull Energy Corp.
Steve & Candy Hill, Oil & Gas Reserves, Inc.
Richard & Susan Hughart, Ada Oil Exploration Corp.
Scott & Rosie Lysinger, Independent
Ernie & Audrey Nix, Baroid
Claude & Tricia Roberts, Alliance Exploration Corp.

John & Rosalie Ruggles, Independent
Graham & Rose Mary Tyner, Dawson Exploration, Inc.

EXHIBITS COMMITTEE

John C. Langford, The Analysts, Chairman
Michael P.N. Quintero, The Analysts

FIELD TRIP COMMITTEE

Steve Thornhill, Wing Corp., Chairman
Maneck G. Chichgar, First Energy Corp. of Miss.
Michael F. Liebelt, Marathon Oil Co.
Jimmy A. Rodriguez, Transco Gas Pipeline Corp.
David N. Witter, Transco Gas Pipeline Corp.

HOUSING COMMITTEE

Fred Schall, Consultant, Chairman
Steven E. Jakatt, Texas Eastern Exploration Co.
Donna R. Messer, Texas Gas Exploration Corp.

LADIES ACTIVITIES COMMITTEE

Glenna Floyd, Co-Chairman Norma Jean Bacho, Co-Chairman
Pat Smith, Cookbook
Marion Hawkins, Favors
Anna Mae Thompson, Favors
Dottie Dozier, Friday Brunch
Shirley Gordon, Friday Brunch
Dixie Bartell, Galleria Shopping & Luncheon
Nancy Rust, Galleria Shopping & Luncheon
Mary Ann Mayse, Galveston Tour
Caryl Threinen, Galveston Tour
Barbara Brown, Gift Shop
Pat Hefner, Hospitality
Carolyn Holland, Hospitality
Madge Frew, Information
Jackie Smith, Information
Katherine Bennett, Packet
Geri Pace, Packet
Sandy Warren, Publicity & Invitation
June Buongiorno, Registration
JoAnn Milner, Registration
Gwen Degen, Transportation
Sylvia Morris, Transportation

PRINTING COMMITTEE

Robert C. Pace, American Coastal Energy, Chairman
David A. Pustka, American Prospectors, Inc.
Edgar E. St. James, Jr., Mesa Petroleum Co.

PROGRAM COMMITTEE

Paul M. Harris, Gulf Research & Development, Chairman
Susan A. Longacre, Getty Oil Co.
Stephen O. Sears, Shell Development, Speakers Breakfast
David L. Stoudt, Mosbacher Production Co.
Emily L. Stoudt, Getty Oil Co., Tobin Theatre

PUBLICITY COMMITTEE

William R. Cobb, McCormick Oil & Gas Co., Co-Chairman
Kenneth Nemeth, Adobe Oil & Gas, Co-Chairman
Bryan K. Richards, Sotrana-Texas Corp., Co-Chairman

REGISTRATION COMMITTEE

Richard G. Guerrero, Armada Resources, Inc., Chairman
Claudia Ludwig, Phillips Petroleum, Vice-Chairman
Virginia Lee Bick, Consultant
John P. Ferguson, C.V. Hagen & Associates
Connie Moore, F. Wm. Carr
Mike Nowicki, Trunkline
Tony Reso, Tenneco Oil Co.

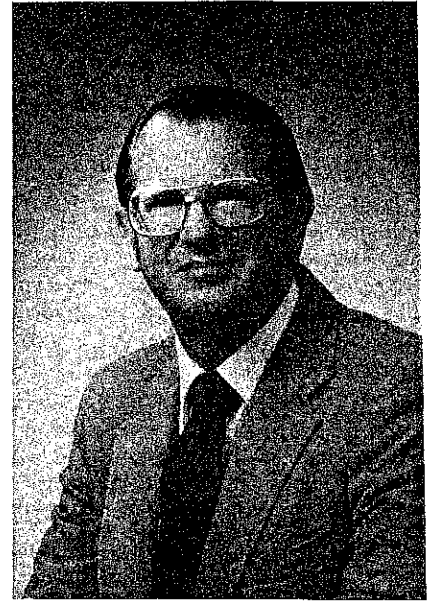
SEPM COMMITTEE

Jack Colle, Consultant, Program Chairman
C. Clarence Albers, Amoco Production Co.
Charles W. Stuckey, Union Oil of California (Retired)
Jim Bain, Gulf Research & Development Co., Awards
John E. Kilgore, Chevron USA, Inc., Editor

TRANSPORTATION COMMITTEE

Dave Eggleston, Geomap, Chairman

**GULF COAST ASSOCIATION OF GEOLOGICAL SOCIETIES
BEST PAPER AWARDS, THIRTY-FIRST ANNUAL MEETING
CORPUS CHRISTI, TEXAS**



THE FIRST PLACE and the A.I. Leversen Memorial Awarded to Edward C. Roy, Mark Eidelbach and Nancy Trumbly for their paper entitled, "A Late calcarenite beach complex associated with submarine volcanism, Wilson County, Texas"

Edward C. Roy, Jr., received his B.S. and Ph.D. degrees in geology from Ohio State University in 1961 and 1964. Upon graduation, he worked for the Shell Oil Company on the Gulf Coast until 1966. He then became an Assistant Professor of Geology at Trinity University in San Antonio. Presently, he is Professor and Chairman of the Department of Geology.

Roy's research interests are paleontology, paleoecology, biostratigraphy and sedimentology. His publications are devoted to the paleoecology and sedimentology of Mesozoic and Cenozoic rocks. He has served as the President of the Gulf Coast Association of Geological Societies, and of the South Texas Geological Society. For many years he has held memberships on numerous committees of the AAPG, SEPM, and GCAGS. He is the General Chairman for the annual AAPG/SEPM Convention to be held in San Antonio in 1984.

He is a member of the American Association of Petroleum Geologists, Society of Economic Paleontologists and Mineralogists, Geological Society of America, Paleontological Society, and the South Texas Geological Society.

Mark Eidelbach is a petroleum geologist specializing in the Upper Gulf Coast Cretaceous Carbonate Environments. His geological research has been in the Gulf Coast and the Midland Basin. He received his Bachelor of Science from the University of Texas at Austin Texas in 1950. He is a partner in the firm of MARK IV ENERGY based in San Antonio, Texas. Eidelbach is a member of the American Association of Petroleum Geologists, the Society of Independent Professional Earth Scientists, South Texas Geological Society, and the Abilene Geological Society.

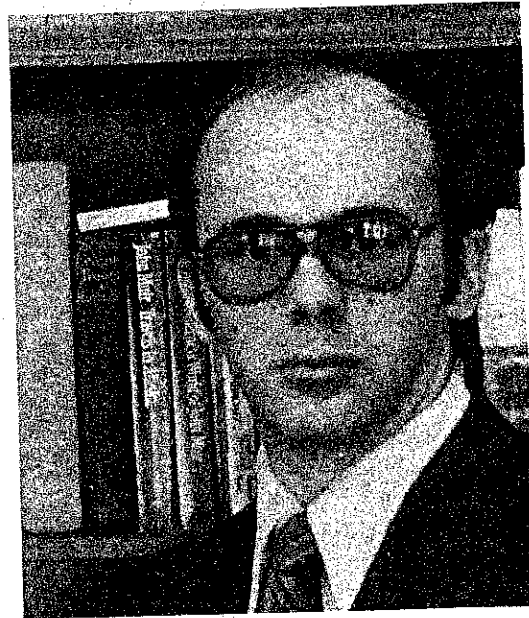
Nancy Trumbly graduated from Trinity University in December, 1980 upon completion of the requirements for a B.S. in Geology. At that time she was employed as Exploration Geophysicist for Placid Oil Co., in San Antonio. In August, 1981, Nancy began graduate studies at the University of Oklahoma to obtain her Masters degree in Geology. Ms. Trumbly is currently a teaching assistant at O.U. and is working on her thesis entitled "A study of the Marine-Meteoric Vadose Zone and its Diagenetic Effect on Jamaican Holocene Carbonate Rocks and Sediment".

SECOND PLACE was awarded to James L. Coleman, Jr. and Craig J. Coleman for their paper entitled "Stratigraphic, Sedimentologic and diagenetic framework for the Jurassic Cotton Valley Terryville massive sandstone complex northern Louisiana."

James L. Coleman, Jr. in 1971 received his B.S. degree in geology and chemistry and in 1978 M.S. in geology from Mississippi State University. From 1972 to 1975 he worked as an oceanographer for the U.S. Navy, was engaged in geologic and geophysical investigations of Canadian Grand Banks/Scotian shelf and Mid-Atlantic Ridge. In 1979 he joined Amoco as an exploration geologist and is continuing his affiliation. With Amoco his duties included study of Cretaceous and Jurassic in ARKLA; petroleum geology of Alabama, Georgia and Appalachian regions. He has also been involved in computer applications to exploration.

James L. Coleman, Jr. authored many published and unpublished reports on geology and petroleum potential of Newfoundland Grand Banks, Oligocene paleontology, Tertiary sedimentology, solar heat storage geology, Karst terrains, barrier beaches, computer application to petroleum geology, Jurassic sedimentation and diagenesis and gas recovery from tight sandstone.

He is a member of AAPG, Gulf Coast section — SEPM and Mississippi Academy of sciences.



THIRD PLACE was awarded to George J. Grabowski, Jr. for his paper entitled "Source rock potential of the Austin Chalk, Upper Cretaceous, Southeastern Texas."

George J. Grabowski, Jr. received a B.S. degree in geology from Bucknell University in 1974, a M.A. degree in geology from the Johns Hopkins University in 1976, and a Ph. D. degree in geology from Rice University in 1981. He was a Gulf Oil Foundation Fellow while at Rice University and received awards from Sigma Xi and the Houston Geological Society upon graduation for excellence in research and education. Before returning to Rice for his doctorate, George worked as a geologist for the joint U.S. Geological Survey — Kentucky Geological Survey Areal Mapping Program and is a coauthor of the Geological Map of Kentucky. Since graduating from Rice, he has been studying the sedimentology and geochemistry of oil shale and oil sand for Exxon Production Research Company in Houston. His research interests involve the sedimentation and diagenesis of organic-rich and chemical sediments, and the origins and geochemical processes affecting organic matter in rocks. His paper on the Austin Chalk stems from his doctoral dissertation.

CONSTITUTION AND BYLAWS

GULF COAST ASSOCIATION OF GEOLOGICAL SOCIETIES

ARTICLE I — Name

This is a non-profit organization and shall be known as the "Gulf Coast Association of Geological Societies." It is hereinafter referred to as "This Association."

ARTICLE II — Object

The object of This Association is to provide for discussion and publication of papers on subjects and problems coming within the scope of the Geologic profession and with particular emphasis on Gulf Coast geology.

ARTICLE III — Organization

This Association is an organization of AAPG-affiliated Geological Societies in the Gulf Coast Area.

SECTION 1.

The business of This Association shall be transacted by an Executive Committee composed of one representative from each member society and the President, Vice-President, Secretary, Treasurer, and Past President. The Secretary and Treasurer shall be non-voting members of the Executive Committee. The Vice-President, Secretary, and Treasurer shall be elected by the Executive Committee at the annual meeting. The Vice-President shall be nominated by the Executive Committee of the local Geological Society next in line to host the annual meeting. The Vice-President shall be nominated by the Executive Committee of the host society for the annual meeting two years hence and shall accede to the Presidency. Thus each year the President, Secretary and Treasurer will be from the host society with the Vice-President providing continuity with the Executive Committee as he assumes the Presidency in the ensuing year. The duties of these officers shall be those customary to their respective offices.

The GCAGS representative to the Advisory Council of the American Association of Petroleum Geologists shall be selected by the Executive Committee of GCAGS and shall be an ex officio, non-voting member of the GCAGS Executive Committee.

Each member society shall designate a representative to the Executive Committee with the exception that the host society, the next annual host society and the immediate past host society will be entitled to two votes by virtue of their members holding the offices of President, Vice-President and Past President.

The officers of the Executive Committee shall be elected for a term of one year. They shall be elected and assume their duties as soon after the annual meeting of This Association as is practicable. Any vacancies shall be filled by the Executive Committee as provided above in Paragraph 1.

SECTION 2.

The business of This Association shall be conducted by the Executive Committee. A simple majority vote of the members present at meetings is required to effect decisions, except in those matters which require a greater majority, as set forth in the Constitution and Bylaws.

A quorum shall consist of more than one-half of the voting members of the Executive Committee.

ARTICLE IV — Meetings

There shall be an annual meeting of This Association, the time and place of which shall be determined by the Executive Committee.

ARTICLE V — Publications

There shall be an annual *Transactions* published by This Association, which shall contain papers presented at the annual meeting, and such other material as selected by the Executive Committee. The Executive Committee is authorized to have published additional bulletins, and other material which they feel will further the object of This Association.

ARTICLE VI — Funds

The funds of This Association shall be deposited in any national bank or Federally insured Savings and Loan Association selected by the Finance Committee, to the credit of This Association, or invested in U.S. Government Bonds at the discretion of the Finance Committee.

ARTICLE VII — Amendments

Amendments to this Constitution may be proposed by the Executive Committee, or by any two member societies. Proposed amendments shall be submitted to each of the member societies in writing. It shall require an affirmative vote of three-fourths of the member societies to ratify an amendment to this Constitution.

ARTICLE VIII — Later Affiliation

Non-member Geological Societies in the Gulf Coast Area which are affiliated with AAPG may petition the Executive Committee for membership and shall be accepted by an affirmative vote of three-fourths of the Executive Committee.

AMENDMENT I

Any member society may resign from This Association at any time by written notice to the Executive Committee. There shall be no obligation to transfer to such resigning society any part of This Association's funds.

AMENDMENT II

This Association shall terminate at such time as a majority of the member societies shall so vote. Upon dissolution all funds and other property shall be divided equally among the member societies.

BYLAWS

I. COMMITTEES:

The President, with the approval of the Executive Committee, shall appoint the Annual Meeting Chairman, and the following permanent committees:

- A. Publications
- B. Advertising
- C. Publicity

Appointment to these committees shall be for a term of one year.

1. Annual Meeting Chairman

The Annual Meeting Chairman shall direct the staging of the annual meeting, and shall have the authority to appoint such additional committees as he deems necessary.

2. Publications

The Publications Committee shall be responsible for obtaining papers for presentation at the annual meeting, and editing and publishing the annual *Transactions*. It shall endeavor to stimulate geologists in the Gulf Coast to prepare papers which can be collected and published in the *Transactions*, symposium or other form in order to further the object of This Association as set forth in Article II of the Constitution. This committee shall be composed of one member from each of the affiliated societies.

3. Advertising

The Advertising Committee shall be responsible for obtaining advertisements in the publications of This Association directed by the Executive Committee. This committee shall be composed of one member from each of the affiliated societies.

4. Publicity

The Publicity Committee shall be responsible for obtaining maximum and local publicity of the activities of This Association. Also it shall be the responsibility of this committee to stimulate interest and participation in association affairs. The Executive Committee shall function as the Publicity Committee.

The President, with the approval of the Executive Committee, may appoint such additional committees as are necessary to conduct the business of This Association.

II. TREASURER:

The Treasurer shall have the authority to issue checks against the Annual Meeting bank account of This Association on his sole signature, but in the event of his absence or incapacity to act, withdrawals or payments by checks may be made on the signature of the President during the continuance of the absence, or incapacity, of the Treasurer. In this event, the identity and authority of the President, and the circumstances relating to the absence or incapacity of the Treasurer shall be certified by the Executive Committee, if so required by the depository. The Treasurer shall submit a financial report on the Annual Meeting at each meeting of the Executive Committee and shall keep a set of books in accordance with good accounting practices. He shall submit the books of the Annual Meeting to the Finance Committee by March 1st following the Annual Meeting. The office of Treasurer shall be bonded as directed by the Executive Committee.

III. FINANCE COMMITTEE:

The Finance Committee shall be responsible for investing and managing the funds of the Association. They shall be responsible for advancing to the Treasurer the necessary funds for operating the Annual Meeting and shall disburse funds for expenses and projects not related to the Annual Meeting as directed by the President upon approval by the Executive Committee. The Committee shall have authority to invest the funds as outlined in Article VI. They shall prepare a financial report on the Association's funds and submit it each meeting of the Executive Committee. They shall also keep an inventory and storage record of publications and equipment owned by the Association. They will keep a set of books in accordance with good accounting practices and will submit the books for auditing as requested by the Executive Committee. The Committee will oversee the preparation and submittal of the Association's Annual Income Tax Return. The Committee will also keep a file of these financial reports, as well as the report of the Treasurer for each Annual Meeting, for access by officers and representatives of the annual meetings of future years. The Committee shall consist of three members serving staggered three-year terms, such that each year one member will complete his term and a new member will be appointed in his place. The President of the Association, with the approval of the Executive Committee, shall appoint the members of the Finance committee and they shall elect their own Chairman. Members of the Finance Committee shall be bonded as directed by the Executive Committee.

IV. These Bylaws may be amended by an affirmative vote of three-fourths of the Executive Committee.

V. There shall be no dues.

GULF COAST ASSOCIATION OF GEOLOGICAL SOCIETIES PAST OFFICERS AND CONVENTION CHAIRMEN

YEAR	HOST SOCIETY	PRESIDENT	VICE-PRESIDENT	SECRETARY	TREASURER	CONVENTION CHAIRMAN
1951	New Orleans	L. Bowling				
1952	Corpus Christi	W.M. Chaddick	W.A. Gorman	J.S. Spencer	E.M. Baysinger	W.J. Nugent
1953	Shreveport	R.T. Wade	D.D. Utterback	W.A. Peterson	T.D. Barber	
1954	Houston	W.R. Canada	W.H. Knigh	F.H. Webster	E.W. Kimball	
1955	Biloxi	A.E. Blanton	L.L. Traupe	C.W. Holcomb	C.C. Barber	R.D. Sprague
1956	San Antonio	R.L. Layden	M.W. Beckman	R.A. Davis	A.F. Scott	G.J. Joyce
1957	New Orleans	H.N. Hickey	P. Montgomery	E.T. Musselman	K.C. Anderson	T.H. Philpott
1958	Corpus Christi	E.A. Lohse	R.W. Grayson	J.F. Moss	M.H. Wallace, Jr.	R.C. Wilshusch
1959	Houston	G.C. Hardin, Jr.	L. Harvey	W.W. Woolfolk	J.A. Wheller	O.G. Bell
1960	Biloxi	M.F. Kirby	D.N. Osburn	A.W. Wood	E.G. Jeffreys	A.E. Blanton
1961	San Antonio	D. Dasso	E.P. Roth	H.O. Woodbury	E.L. Ames	L.L. Palmer
1962	New Orleans	T.H. Philpott	J.C. Byrd	W.E. Bancroft	K. Soule	L.H. Meltzer
1963	Shreveport	J.C. Byrd	E. Knott	R.W. Luker	R.E. Rogers	H.J. Tyler
1964	Corpus Christi	E. Knott	R.E. Fairchild	K.C. Harkins, Jr.	D.A. Pedrotti	B.F. Dyer
1965	Houston	R.E. Fairchild	A.M. Borland	W.A. Robbins, Jr.	J.L. George, Jr.	E.A. Lohse
1966	Lafayette	A.M. Borland	J.H. Hensley	M.L. Frazier, Sr.	J.S. Schoelen	R.R. Copeland
1967	San Antonio	W.L. Stapp	M.D. Horton	L.G. Hughes	L.C. Bryant	M.O. Turner
1968	Jackson	M.D. Horton	R.O. Vernon	J.W. Yon, Jr.	E.D. Minihan	L.E. Warren
1969	Miami	R.O. Vernon	H.J. Tyler	C.E. Brown	C.W. Hendry, Jr.	H.S. Puri
1970	Shreveport	H.J. Tyler	L.H. Meltzer	M.L. Dwight	B.C. Tucker	J.O. Goffe
1971	New Orleans	L.H. Meltzer	D.R. Boyd	M.H. Oakes	P.G. Gray	R.G. Williamson
1972	Corpus Christi	D.R. Boyd	F.M. Schall, Jr.	M.E. Hole, Jr.	J.E. Melton	J.M. Sides
1973	Houston	F.M. Schall, Jr.	S.J. Lysinger	T.J. Eby, Jr.	P.W. Cawthon, Jr.	C.E. Harrison
1974	Lafayette	S.J. Lysinger	W.H. Moore	W.E. Taylor	J.J. Bellamy	F.W. Harrison Jr.
1975	Jackson	W.H. Moore	C.L. Sartor	J.T. Palmer	H.L. Ladner	C.H. Williams, Jr.
1976	Shreveport	C.L. Sartor	R.E. Boyer	A.E. Bell	C.E. Brown	L.E. Jordan
1977	Austin	R.E. Boyer	P.G. Gray	R.M. Swords	F.L. Osborne, Jr.	E.G. Wermund, Jr.
1978	New Orleans	R.W. Stephens	E.C. Roy, Jr.	S.L. Perkins	C.J. Corona	Jules Braunstein
1979	San Antonio	E.C. Roy, Jr.	F.W. Harrison, Jr.	J.W. Shirley	L.C. Bryant	George His
1980	Lafayette	F.W. Harrison, Jr.	P.M. Strunk	T.J. Wintermute	R.A. Anderson	M.A. Munchrath
1981	Corpus Christi	P.M. Strunk	J.J. Amoruso	C.G. Beckwith	W.R. Payne	Wilson Humphrey
1982	Houston	J.J. Amoruso	S.C. Childress		C.A. Baird	J.O. Lewis

HONORARY MEMBERSHIP



Don R. Boyd

In recognition of his many unselfish contributions, his distinguished service and devotion to the geological profession, the Gulf Coast Association of Geological Societies hereby bestows Honorary Membership on Don R. Boyd. This is our most distinguished award and Don is one of the first recipients.

Don R. Boyd was born October 15, 1934 in Tyler, Texas. He received a B.S. degree in geology from the University of Texas-Austin in 1958 and an M.S. degree in geology from Louisiana State University-Baton Rouge in 1959.

Upon graduation Don was employed as a geologist for Pan American Petroleum Corporation in Corpus Christi, Texas. He later worked as an exploration geologist for Texas Eastern Transmission Corporation. In 1966 he became an independent geologist working on a retainer with Edwin Allday of Houston and later was associated with W.L. Sinclair of Dallas on the same basis. His relationship with Sinclair spanned some twelve years and during this period they jointly owned and operated W.L. Sinclair Development Company and Gulf Coast Exploration Company. After Sinclair's death, Don became Texas Gulf Coast Manager for Edwin L. Cox and Berry R. Cox. He resigned from that position to work with Martin Exploration Company of Metairie, Louisiana, as executive vice president during that company's peak activity period of deep Tuscaloosa exploration. Throughout his professional career Don has lived in Corpus Christi—still maintaining his home and offices in that city while working in Louisiana for Martin. At the present time he is president and chief operating officer of J3 Oil Company, Inc. and J3 Drilling Company, Inc. in Corpus Christi.

Throughout his career, Don has been active in professional organizations. He held numerous offices in the Corpus Christi Geological Society and served as president in 1966-1967. He served as vice president and then president in 1971-1972 of the Gulf Coast Association of Geological Societies. Don served on the first Special Projects Committee of GCAGS, was responsible for the last update of the Constitution and By-Laws which resulted in the formation of the Finance Committee and was one of three persons initially appointed to that committee. In 1972 during his term as President of GCAGS, he was instrumental in publishing the Tectonic map of the Gulf Coast in cooperation with AAPG. He represented the GCAGS on the Advisory Council of AAPG from 1974-1977. In 1964, he presented a paper co-authored with Byron F. Dyer on the "Frio Barrier Bar System of South Texas" that received one of the Best Paper Awards at the annual GCAGS meeting. He has published approximately fifteen articles on the geology of the Gulf Coast. He currently serves as chairman of the Advisory Council of the University of Texas Geology Foundation and was a charter member of the Advisory Council to the Louisiana State University Geology Endowment.

Don has been a member of AAPG since 1958 and has served on numerous committees and has had several terms in the House of Delegates. From 1979-1981 Don served as secretary of AAPG. Today he still maintains a high interest level in both AAPG and local geological society affairs. Both the geological profession and the petroleum industry have benefited greatly from Don's service.

Wilson Humphrey

Jules Braunstein was born November 4, 1913 into the beginning of a cold, snow-drifted Buffalo, New York winter. Upon graduation from high school he quickly moved southward to attend George Washington University and received his B.S. geological degree in 1933. In 1934 Jules and Olga Ravitch were married. In the depth of the Depression years, he wisely elected to attend Columbia University while Olga was employed and Jules received his Masters Degree in 1936. Jules accepted a position as micropaleontologist with Shell Oil Company in 1937 and served as stratigrapher and Staff Geologist over the next 41 years. His years with Shell were spent successively in the cities of Houston, Shreveport, Jackson, and New Orleans. He retired from Shell Oil in 1978 and immediately accepted a position on the University of New Orleans faculty to teach historical and physical geology and technical report writing. In addition, he is southeast regional coordinator for the COSUNA project, involves himself in technical writing and is General Chairman for the 1982 GSA Convention in New Orleans. He was General Chairman of the 1978 GCAGS meeting in New Orleans.

As an active member of AAPG, GSA, and SEPM he has contributed substantially over the years to the geological profession and has received many well-deserved honors. He is recognized as one of geology's most respected editors. Jules served as President of the Gulf Coast Section of SEPM in 1970-71. He received the Distinguished Service Award from AAPG. The 1971 Transactions of the GCAGS was dedicated to Jules. He has served the New Orleans Geological Society as President, Vice-President, Director, and as Chairman of various projects. He has been awarded Honorary Membership in NOGS, AAPG, SEPM, and the Gulf Coast Section of SEPM. He edited the GCAGS Transactions in 1957 and 1962, and the four volumes of the Bibliography of Gulf Coast Geology.

It is because of his 45 years of unselfish service to the profession that we bestow the additional honor on Jules of GCAGS Honorary Membership.

James A. Seglund

HONORARY MEMBERSHIP

Jules Braunstein

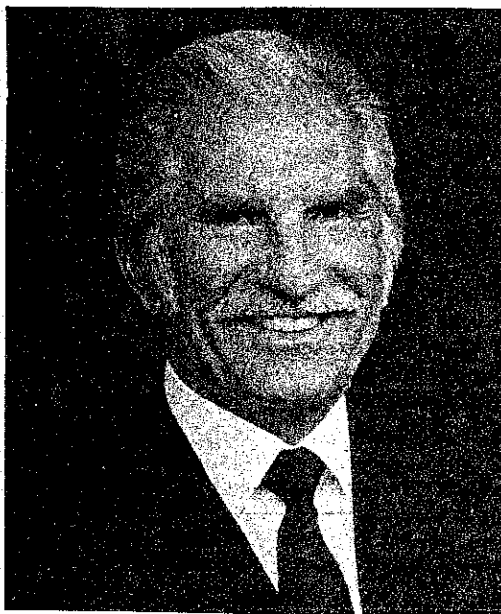
For forty-five years of outstanding leadership and unselfish service in Gulf Coast geology.



HONORARY MEMBERSHIP

Michel T. Halbouty

A renowned geologist, inspirational lecturer and a living legend in Gulf Coast geology.



Michel T. Halbouty, known as "Mike" to all who know him, is the author of books and numerous professional papers, the recipient of many citations and awards, an outspoken optimist about the remaining oil and gas potential of the world and an advisor to the President of the United States on energy matters. He is the recipient of the Sidney Powers Memorial Medal and a past president of AAPG.

Mike is dynamic and exhaustingly energetic. He has boundless enthusiasm and optimism for any project that interests him. Always searching for new concepts and approaches in petroleum exploration, he has often published on the importance of stratigraphic traps, stressed the importance of Maximum Brain Power as an exploration breakthrough, emphasized the need for exploration ingenuity in geological and geophysical coordination, advocates the application of Landsat imagery to petroleum and mineral exploration and urges the purposeful search for the subtle traps. His book *Salt Domes - Gulf Region, United States and Mexico* is an outstanding contribution to the world's scientific literature and it is particularly beneficial to those in the GCAGS who study and explore salt domes.

Few may recall his statemanship, several years ago, in resolving the deepening controversy affecting the relationship between the GCAGS and AAPG. It even threatened to upset the cooperative effort among the various Societies of GCAGS. Because of his foresight GCAGS has attained the preeminence it has today.

Mike is a leader in our profession. His speeches and pronouncements are eagerly awaited by his peers. He has distinguished himself in petroleum geology, made outstanding contributions to the science and his achievements well known. He is a creative and imaginative scientist who has been an inspiration to so many of us in our profession. His many activities have greatly benefitted the profession and members of the GCAGS.

It is therefore befitting that Michel T. Halbouty, one of the world's outstanding geologists and one of our profession's elder statesmen, should receive GCAGS's Honorary Membership.

Merrill W. Haas

Frank W. Harrison, Jr., a Lafayette Independent Geologist, was born in Bastrop, Louisiana, October 24, 1928. In 1950, he received his Bachelor of Science degree in Petroleum Geology from Louisiana State University. After service in the U.S. Army and early professional association, Frank has been in Lafayette, Louisiana as an Independent and Consulting Geologist since 1959. He engaged in an active exploration career and at the same time has carried on an extensive consulting practice. Frank is recognized as one of the Gulf Coast's foremost expert witnesses before the Louisiana Department of Conservation.

In the late fifties, Frank became active in GCAGS serve as Executive Committee Member (1959-60), Convention Committee Chairman (1965-66), Convention General Chairman (1973-74), Vice President (1978-79) and President (1979-80). Other professional affiliations were: Lafayette Geological Society (President - 1961 and Honorary Life Member - June, 1971), Louisiana Section AIPG (Vice President), SIPES (Vice President). The culmination of Frank's professional services occurred in 1981 when he began his present position as President of AAPG.

Frank has published several papers and participated actively with the projects of the Lafayette Geological Society as well as GCAGS.

All of his personal efforts and leadership roles have not limited Frank's more personal pursuits. He has remained active in his church, schools, colleges and universities, Boy Scouts, Little League, Salvation Army and the Chamber of Commerce where he has served as teacher, lecturer, leader and advisor in all walks of life. Frank currently serves on the Board of Trustees of Asbury Methodist Church, he is Treasurer of Lafayette Petroleum Club and is a Charter Member of the LSU Endowment Foundation.

There are no limits to Frank's involvements and achievements. His genuine concerns for the geological profession and its problems are surpassed only by this enthusiastic determination to resolve these issues and by his willingness to share it all with us. Frank is indeed a credit to GCAGS and to our profession.

Allen M. Borland

HONORARY MEMBERSHIP

Frank W. Harrison, Jr.

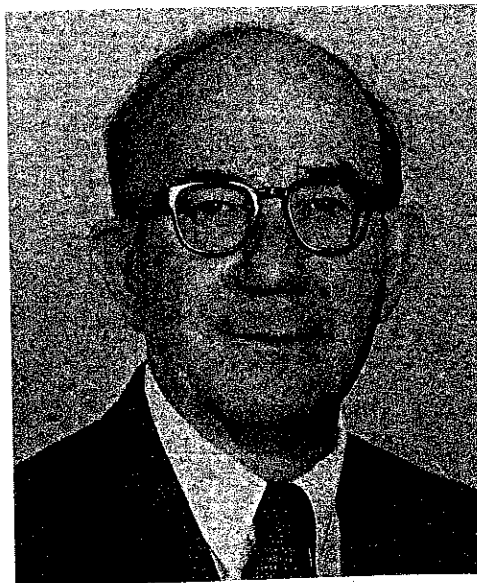
His great talents and abilities as a geologist and leader are without limits.



HONORARY MEMBERSHIP

Lee Hilliard Meltzer

In recognition of his great technical and outstanding leadership contributions.



Lee Hilliard Meltzer was born May 6, 1915 in Chicago. In the year 1936 he received his Bachelor of Science Degree in Geology from the University of Chicago then accepted a position with Shell Oil Company as a geophysicist in Lake Charles, Louisiana. Later he moved to South Texas as a geological scout and geologist with the Union Producing Company in Beeville, Texas. In 1941 Lee transferred across the Sabine River to Union Producing's office in Shreveport, Louisiana.

While serving in Shreveport, Lee continued to move up the corporate ladder with Union Producing, serving in reserve evaluations and later as Exploration Manager. He was an active member of the Shreveport Geological Society serving as Secretary and later as Treasurer. In 1956, Lee struck out on his own to establish a consulting practice. After opening his office in New Orleans he quickly built a reputation as an expert in oil and gas appraisal and exploration. Lee continues this successful consulting practice but it is now more and more often interrupted when he chooses to work in his garden.

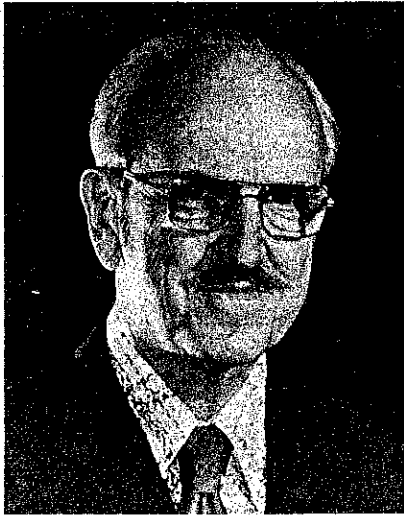
Lee has been an active member of AAPG since 1940. He has also served as the Gulf Coast Representative to the Advisory Board of the Division of Professional Affairs from 1980 to 1983. Lee has been an AAPG Certified Petroleum Geologist since 1966.

The Gulf Coast Association of Geological Societies has been blessed with Lee's enormous leadership abilities for many years. First recognition of his work came when in 1968 he was awarded a special GCAGS "Service" Award. Later he served as GSAGS Vice President in 1970 and was then elected GCAGS President in 1971.

Lee has also served with great distinction within the New Orleans Geological Society where he received the Outstanding Service Award in 1964. Lee served NOGS as President in 1968 and as Director in 1969-70. In 1971 Lee was granted Honorary Life Membership in the NOGS. He continues to serve NOGS to this day as Chairman of the Technical Projects Committee.

J.B. Storey

HONORARY MEMBERSHIP



Harold N. Hickey

*For his enduring skills, leadership
and dedication to the service of his colleagues.*

Harold was born in Cedar Rapids, Nebraska. He graduated at the Colorado School of Mines in 1924 with a degree of Engineer of Mines. It was during his years at school that he became a member of the AAPG, a membership which spans some fifty-eight years and still continues.

Harold began his career with the American Smelting and Refining Company and in May 1928 he joined the California Company and remained with them until his retirement.

Throughout Harold's thirty-eight years with Chevron he rose steadily through the ranks attesting to his organizational acumen and his outstanding ability to teach, inspire and promote teamwork. He began as a surface geologist mapping the Rocky Mountains then became Geophysical Supervisor, District Geologist, Exploration Superintendent, Chief Exploration Geologist and finally Chief Evaluation Geologist.

While in Denver for some thirteen years, Harold participated in the Rocky Mountain Association of Petroleum Geologists, holding the positions of President, Vice President, and various other offices. During his years of membership with AAPG, Harold served as the New Orleans Geological Societies' representative on the Business Committee of AAPG and for ten years he was Associate Editor. As a member of NOGS he served as their representative to the GCAGS and was elected as NOGS Director several times. His outstanding contribution to NOGS was recognized in 1963 when he was presented with an Honorary Life Membership. Harold was selected as President of GCAGS in 1956/57.

After retirement from Chevron in 1966 Harold spent a great deal of his time pursuing his two primary hobbies; amateur photography and travel.

In 1969 Harold accepted the Chairmanship of the Tectonic Map Committee for the Special Projects Committee of the GCAGS. This committee compiled an excellent tectonic map of Gulf Coast Province. Three years later a map was printed by GCAGS/AAPG which is widely used by geologists the world over. Harold was then presented with an Outstanding Service Award in 1972 by GCAGS for his contributions to the Geology of the Gulf Coast.

Today, Harold is the proud husband of Catherine and father of one daughter, Mary Kay, four grandchildren and six great-grandchildren and has retired in New Orleans to be near his family and friends. Some people just never stop contributing. Harold, now eighty-one years young, is one of those people.

A.T. Green, Jr.

FOR DISTINGUISHED SERVICE

Robert E. Boyer

For his contributions to research, teaching, leadership and professional services.



Born in Pennsylvania, Bob received his education at Colgate (B.A. in Geology), Indiana (M.A. in Geology) and Michigan (Ph.D. in Geology). Bob came to Texas in 1957 to begin a remarkable teaching and administrative career with The University of Texas at Austin. He rapidly advanced through the academic ranks as Instructor, Assistant Professor, Associate Professor, and in 1967 he became a Full Professor of both Geology and Education. From 1971 to 1980 Bob served as a highly effective, and respected Chairman of Geological Sciences and in September of 1980 he became Dean of the University's College of Natural Sciences.

Bob Boyer is first-class teacher and has made exceptional contributions to several areas, notably geological and science education. Bob is active in numerous professional organizations and has served as President of NAGT, AGS, Texas Academy of Science, Texas Chapter of Sigma Xi and in 1976-77 he served as President of GCAGS. Additionally, Bob continues to serve GCAGS as Chairman of the Publications Committee.

Bob's career has been characterized by high energy and dedication to his work and has earned him the respect of his peers for his competence, efficiency, perspective and loyalty. He is a man of solid judgment, high principle and absolute integrity. He is thorough, reliable and never assumes an obligation or responsibility casually.

William L. Fisher

FOR DISTINGUISHED SERVICE

Paul Barkley Souders

For his distinguished and long time beneficial service to GCAGS.



Barkley has served GCAGS in many capacities. In 1965 he was Program Chairman for the annual meeting in Houston. In 1966 he was appointed Chairman of the Publications Committee. In this capacity Barkley revamped the publications structure because he recognized the value of a large inventory whereby he implemented a campaign strategy to fully exploit this most valuable asset of GCAGS.

Prior to Barkley's appointment as Publication Chairman, the GCAGS Transactions inventory was not insured. He then made arrangements to completely inventory, arrange storage and insure the value of all GCAGS publications. Several of the prior Transactions were then out of print. Barkley and his committee spent the following year researching costs of reprinting and at the 1968 Executive Committee in Jackson, Mississippi, Barkley's committee took the following actions concerning GCAGS publications:

1. Barkley recommended use of a display booth at the GCAGS annual meeting and technical meeting to display and advertise all GCAGS publications.
2. Barkley also recommended a price increase so that the Transactions would provide much needed income for the GCAGS.
3. He then recommended a central repository for all publications and reprints of Transactions that were out of print.

The GCAGS Executive Committee approved all of these recommendations.

The Publications Committee has over these many years played an important part in making GCAGS financially sound.

Paul Barkley Souders has distinguished himself with his service to GCAGS and deserves to be honored as recipient of the Distinguished Service Award.

Jeffery V. Morris

FOR DISTINGUISHED SERVICE



Bill C. Tucker

*For his technical competence, management abilities
and unselfish contributions.*

Native of Tulsa, Oklahoma, Bill received a Bachelor of Science degree in Geology from the University of Oklahoma in January, 1943. After serving in the U.S. Army Engineers, he joined Seismograph Service Corporation where he advanced to party chief. He joined P.E. Navarte in January 1948 as a seismologist until February, 1951 when he joined Union Producing Company, in Shreveport, Louisiana as a geophysicist. Bill was active in supervising Union's geophysical activities in South Texas, the upper Texas Coast and South Louisiana from 1951 until 1963. He then became District Exploration Manager in Jackson, Mississippi. United Gas then merged with Pennzoil Company and Bill moved to Shreveport, Louisiana as Exploration Manager in 1967. When the Gulf Coast Division of Pennzoil was established in Houston in 1971, Bill was appointed Division Geophysicist. He served in that capacity until taking early retirement on February 1, 1979. Since that time, Bill has been an independent explorationist.

During this 28 year career, Bill's technical leadership was responsible to a great extent for his company's participation in a number of discoveries and field extensions.

In spite of his busy schedule with various exploration activities, Bill has always found time to serve GCAGS. He has been a member of AAPG since 1946 and a member of SEG since 1947. Bill has always been a member of the local societies where he resided. He served as vice-president of the Ark-La-Tex Geophysical Society in 1958 and was president in 1959.

He has been very active in the Gulf Coast Association of Geological Societies, serving as Treasurer in 1970, Publicity Chairman for the Houston convention in 1973 and as chairman of the finance committee for 1978, 1979, 1980 and 1981. Bill's service to GCAGS as chairman of this important committee has been truly outstanding and he is due much credit for GCAGS's strong financial position.

Bill's outstanding abilities as a geophysicist, geologist, manager and friend have long been recognized by his employers and co-workers. His technical competence, management abilities and unselfish contributions are his most outstanding qualities, however, Bill is more. He is a very fine person in all manners.

John F. Rielly

GULF COAST SECTION SOCIETY OF ECONOMIC PALEONTOLOGISTS AND MINERALOGISTS

OFFICERS

President: William P.S. Ventress, Chevron USA, Inc., 935 Gravier St., New Orleans, Louisiana 70112
President-Elect: John L. Carney, Amoco Production Company, P.O. Box 50879, New Orleans, Louisiana 70150
Vice-President: Kenneth A. Hodgkinson, Exxon Company, U.S.A., P.O. Box 61812, New Orleans, Louisiana 70161
Secretary: Brian J. O'Neill, Shell Offshore, Inc., P.O. Box 61933, New Orleans, Louisiana 70161
Treasurer: Kurt Geitzenauer, ARCO Exploration Company, P.O. Box 1346, Houston, Texas 77251
Past-President: Bob F. Perkins, Department of Geology, The University of Texas at Arlington, Arlington, Texas 76019

1982 ANNUAL CONVENTION COMMITTEE

Program Chairman: Jack Colle, Jack Colle and Associates, 708 C & I Building, Houston, Texas 77002
Editor: John E. Kilgore, Chevron USA, Inc., 935 Gravier St., New Orleans, Louisiana 70112
Representatives: Clarence Albers, Amoco Production Company, P.O. Box 3092, Houston, Texas 77001
Charles W. Stuckey, 11836 Stuckey Lane, Houston, Texas 77024
Awards Chairman: Jim Bain, Gulf Research and Development Company, P.O. Box 36506, Houston, Texas 77036

BUSINESS REPRESENTATIVES

ALABAMA

Janyth S. Tolson, Geological Survey of Alabama, P.O. Drawer O, University, Alabama 35486

FLORIDA

Richard A. Davis, Jr., Department of Geology, University of South Florida, Tampa, Florida 33614

LOUISIANA

Baton Rouge Area: David E. Pope, Louisiana Geological Survey, University Station, Box G, Baton Rouge, Louisiana 70893
Lafayette Area: Michael J. Nault, Tenneco Oil Company, P.O. Box 39300, Lafayette, Louisiana 70503
New Orleans Area: Dennis J. Greig, Chevron USA, Inc., 935 Gravier St., New Orleans, Louisiana 70112
Shreveport Area: Nolan G. Shaw, Department of Geology, Centenary College of Louisiana, P.O. Box 4188, Shreveport, Louisiana 71104

MISSISSIPPI

Ernest E. Russell, Department of Geology and Geography, Mississippi State University, Mississippi 38762

TEXAS

Austin Area: Robert S. Kier, Camp Dresser & McKee Inc., 3445 Executive Center Drive, Suite 220, Austin, Texas 78731
Dallas-Fort Worth Area: Charles L. McNulty, Department of Geology, Univ. of Texas at Arlington, P.O. Box 19049, Arlington, Texas 76019
Houston Area: Richard S. Casey, Geology Department, Rice University, P.O. Box 1892, Houston, Texas 77251
San Antonio Area: Walter Coppinger, Box 389, Trinity University, 715 Stadium Drive, San Antonio, Texas 78284

FIELD TRIP COMMITTEE

William P.S. Ventress, Chevron USA, Inc., 935 Gravier St., New Orleans, Louisiana 70112
John L. Carney, Amoco Production Company, P.O. Box 50879, New Orleans, Louisiana 70150
Field Trip Leaders: Dag Nummedal and Robert Gerdes, Louisiana State University, Baton Rouge, Louisiana
Ron Boyd, Dalhousie University, Halifax, Nova Scotia
Harry H. Roberts, John Wells and Ivor van Heerden, Coastal Studies Institute, Baton Rouge, Louisiana

SECOND ANNUAL RESEARCH CONFERENCE COMMITTEE

Bob F. Perkins, Co-Chairman, Department of Geology, The University of Texas at Arlington, Arlington, Texas
William P.S. Ventress, Co-Chairman, Chevron USA, Inc., 935 Gravier St., New Orleans, Louisiana
Don G. Bebout, Louisiana Geological Survey, Baton Rouge, Louisiana
Sheila C. Barnett, Sohio Petroleum Company, Houston, Texas
Ted Karmen, Amoco Production Company, New Orleans, Louisiana
Gene B. Martin, ARCO Exploration Company, Houston, Texas
Marc B. Edwards, Chairman, Program Advisory Committee, Kerr, Jain & Associates, Houston, Texas
Robert R. Berg, Department of Geology, Texas A&M University
James A. Coleman, Coastal Studies Institute, Baton Rouge, Louisiana
William E. Galloway, Bureau of Economic Geology, Austin Texas
Jory A. Pacht, ARCO Oil and Gas Company, Dallas, Texas
Howard J. Yorston, Exxon Production Research Company, Houston, Texas

HONORARY MEMBERS

Harold V. Anderson
Jules Braunstein
Doris M. Curtis
Hedwig T. Kniker

Stuart A. Levinson
Frank E. Lozo, Jr.
Grover E. Murray
William R. Paine

John R. Sandidge
Fred L. Smith, Jr.
Charles W. Stuckey
Lyman D. Toulmin

**REPORT OF THE PRESIDENT
GULF COAST SECTION
SOCIETY OF ECONOMIC PALEONTOLOGISTS AND MINERALOGISTS
1982**



William P. S. Ventress

The Gulf Coast Section of The Society of Economic Paleontologists and Mineralogists enjoys once again the opportunity to join with the Gulf Coast Association of Geological Societies in this annual meeting.

The GCS-SEPM's participation in this year's gathering is particularly appropriate because of the convention's theme, "1980's Exploration — A Team Effort." The Gulf Coast Section — SEPM's stated purpose of promoting the science of stratigraphy through research in paleontology and sedimentary petrology, especially as it relates to petroleum geology, is in itself an example of a team effort. The Section's technical program presented at this meeting, which covers topics that range from paleontology, sedimentology, stratigraphy, petrology, clay mineralogy to geological history clearly reflects the interdisciplinary approach to exploration that is essential to success in petroleum geology in the Gulf Coast. I want to extend my thanks to the GCAGS for permitting our organization to join with them in this successful annual meeting.

The Gulf Coast Section has continued the high level of activity that was launched two years ago. On November 29, through December 2, 1981, the Second Annual Research Conference was held in Dallas, Texas. Under the overall direction of Bob Perkins and the Program Advisory Committee chaired by Marc B. Edwards, a highly informative, technical program of 23 papers and core workshops explored the "Recognition of Shallow-Water Versus Deep-Water Sedimentary Facies in Growth-Structure-Affected Formations of the Gulf Coast Basin." The almost 300 attendees at this meeting agree that it was perhaps the most stimulating gathering of this kind ever convened on the Gulf Coast.

Our Third Annual Research Conference, entitled the "Jurassic of the Gulf Rim," should be equally informative and highly attractive to geologists concerned with all aspects of the geology of the Jurassic throughout the Gulf Region. This conference will be held in Baton Rouge, Louisiana, November 28 through December 1, 1982. Don Behout and Clyde Moore co-chair the Program Advisory Committee, and through their efforts a superb technical program and core workshops have been assembled.

In April, 1982 our annual field trip, "Depositional Environments of the Central Louisiana Coast" was led by Dag Nummedal and Associates. This excursion into the Atchafalaya Delta and the Coastal Areas of Central Louisiana was highly successful. The 1983 field trip, "Litho and Biostratigraphy of the Upper Cretaceous in the SE Mississippi Embayment" should be of comparable quality.

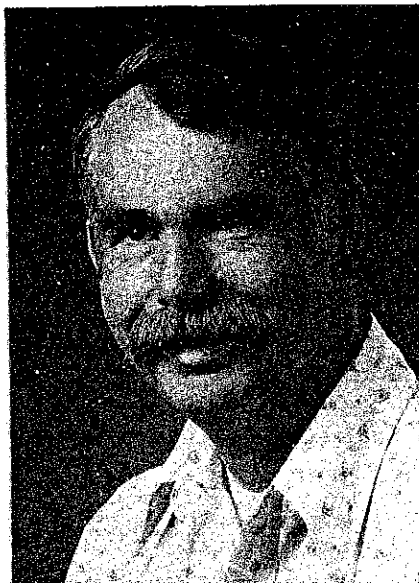
The Gulf Coast Section-SEPM Foundation, which is funded through tax-exempt contributions, is the primary means whereby the Gulf Coast Section is able to sponsor research conferences, field trips and other educational programs and publications. Through the hard work of Bob F. Perkins, who has guided the Foundation through its formative year, and the Foundation Trustees - John B. Dunlap, Jr., Chairman, Doris M. Curtis and C.M. Quigley, Jr., the Foundation has continued to grow. It stands as a prime example of the Section's commitment to support research in Gulf Coast Stratigraphy.

I want to sincerely thank all of the Section's officers for their support and efforts that have brought so much success to the organization this year. My appreciation is extended to Jack Colle and other members of the 1982 Convention Committee, the Field Trip Committee, the Business Representatives, the members of the Second and Third Annual Research Conference Committees for having contributed so unselfishly of their time and energies which have produced such a high level of excellence in all of the Section's activities.

My special gratitude goes to the membership of the GCS-SEPM for the honor of allowing me to serve them as President. I thank you for the privilege of being able to participate in such a challenging and personally rewarding experience.

William P. S. Ventress
President GCS-SEPM

**GULF COAST SECTION
SOCIETY OF ECONOMIC
PALEONTOLOGISTS AND MINERALOGISTS
BEST PAPER AWARDS, TWENTY-EIGHTH ANNUAL MEETING
CORPUS CHRISTI, TEXAS**



THE BEST PUBLISHED PAPER AWARD was awarded to T.A. Daws, A.V. Applegate and J.G. Palacas for the paper entitled "Preliminary Petroleum Source Rock Assessment of the Pre-Punta Gorda Rocks (Lowermost Cretaceous-Jurassic?) in South Florida.

Ted A. Daws was born in Carnegie, Oklahoma in 1942 and was raised in Plainview, Texas. He attended Texas Technological University where he received his B.S. degree in agronomy in 1963. He served in the U.S. Army in 1964 and 1965. From 1966 to 1978 he was employed by the U.S. Army as a civilian conducting field and laboratory investigations at the Medical Research and Nutrition Laboratory, Denver, Colorado. In 1978 he joined the Oil and Gas Resources Branch, U.S. Geological Survey where he is currently analytical supervisor of the Organic Geochemical Laboratory, with special expertise in Rock-Eval pyrolysis and gas chromatography.

Albert V. Applegate attended the University of Illinois from 1938 to 1941. From 1941 to 1945 he served in the U.S. Navy in the Atlantic and Pacific theatres. From 1945 to 1947 he attended Northwestern University and received a B.S. degree in Geology. From 1947 to 1949 he attended the Missouri School of Mines and received a B.S. degree in Mining Engineering. Between 1949 and 1965 he was employed by Creole Petroleum Corporation in Venezuela. After leaving Venezuela he raised cattle in Florida until 1973. Since 1974 he has been employed by the Bureau of Geology of the State of Florida studying deep subsurface stratigraphy.

James G. Palacas received his education at Harvard College (A.B., Geology, 1952); the Pennsylvania State University (M.S., Geology, 1957); and University of Minnesota (Ph.D., Geology and Biochemistry, 1959). From 1952-1953, he worked for the Military Geology Branch, U.S. Geological Survey, Washington, D.C. During two summers, he worked for the Pennsylvania Railroad as a consultant geologist (1954) and taught geology at Macalester College, St. Paul, Minnesota (1958). From 1959-1963, he was employed by Shell Oil Company as an exploration geologist, conducting surface and subsurface stratigraphic, structural and source-rock studies in the Permian Basin. In 1963, Palacas rejoined the U.S. Geological Survey, currently with the Oil and Gas Resources Branch. Research initially included organic geochemical studies of modern siliciclastic and carbonate sediments, Gulf Coast and Florida Bay areas. Since 1976, research has focused on petroleum evolution and source rock assessment of carbonate rocks worldwide with particular emphasis on the South Florida and Permian Basins. In 1980, he was elected Chairman, Organic Geochemistry Division (OGD) of the Geochemical Society (GS) and organized the OGD Symposium "Petroleum Geochemistry and Source Rock Potential of Carbonate Rocks" held at the GSA annual meeting, Atlanta, Georgia. He is a member of the AAPG, GSA, OGD, GS and AAAS.

THE BEST POSTER AWARDED was awarded to E.A. Mancini for poster presentation entitled "Litostratigraphy and Biostratigraphy of Paleocene subsurface strata in southwest Alabama."

Ernest A. Mancini was educated at Albright College, Reading, Pennsylvania (B.S., Biology, 1969), Southern Illinois University (M.S., Zoology, 1972), and Texas A&M University (Ph.D. Geology, 1974). He was employed as an exploration geologist by Cities Service Company from 1974 to 1976. His work stressed depositional environments and stratigraphy of Cretaceous and Tertiary sediments of the Alaska Peninsula and Bearing Sea areas. He joined the faculty of the Department of Geology and Geography at The University of Alabama in 1976, and became an Associate Professor in 1979. He teaches graduate courses in paleoecology, biostratigraphy, biogeology, micropaleontology and petroleum geology. His publications describe the origin of micromorph faunas; Upper Cretaceous and Lower Tertiary clastics and Upper Jurassic carbonates of Texas and Alabama; Upper Cretaceous forearc sedimentation in Alaska; Cenomanian cephalopods of Texas; and the petroleum geology of Alabama. He is listed in American Men and Women of Science and Who's Who in Technology Today. He is a member of Phi Kappa Phi, Sigma Xi, Phi Sigma, Society of Economic Paleontologists and Mineralogists, American Association of Petroleum Geologists (Membership Committee), Alabama Geological Society (Past President), Gulf Coast Section of Society of Economic Paleontologists and Mineralogists, North America Micropaleontology Society, International Micropaleontology Society, and International Geologic Correlation Program.



THE BEST PRESENTATION AWARD was awarded to C.R. Handford for the paper entitled "Genetic Characterization of Recent and Ancient Sabkha Systems."

C. Robertson Handford received his B.S. degree in Geology from Northeast Louisiana State College in 1967, M.S. degree from the University of Arkansas in 1969, and his doctorate in Geology from Louisiana State University in 1976. He has been employed as a research geologist by Union Oil Research Center (1976-77), Texas Bureau of Economic Geology (1977-80), and the Louisiana Geological Survey (1980-81). He is currently a Research Scientist with Amoco Production Company in Tulsa, Oklahoma. Handford's research efforts have been directed mainly toward facies analysis of ancient carbonates evaporites. He is a member of the AAPG, SEPM, and the International Assoc. of Sedimentologists.

**BYLAWS
OF
GULF COAST SECTION OF
THE SOCIETY OF ECONOMIC
PALEONTOLOGISTS AND MINERALOGISTS**

**ARTICLE 1.
OBJECT**

1.01 The object of the Gulf Coast Section of the Society of Economic Paleontologists and Mineralogists is to promote the science of stratigraphy in the Gulf Coast states through research in paleontology and sedimentology petrology, especially as it relates to petroleum geology. The Corporation, herein referred to as the "Section", will be closely associated with the Gulf Coast Association of Geological Societies and will cooperate with it and with the local geological societies of which it is composed for the furtherance of mutual objectives.

**ARTICLE 2.
MEMBERS**

2.01 The Section shall have members, associate members, charter members, and honorary members.

2.02 Members shall be persons engaged in paleontologic, petrographic studies that have application to the geology of petroleum who are members or associate members of the Society of Economic Paleontologists and Mineralogists and who work or reside in the Gulf Coast province of the states of Texas, Louisiana, Mississippi, Alabama, Georgia, or Florida, or whose interest or work is principally within these states. Membership, once obtained, shall not be dependent upon continued residence in the aforementioned states.

2.03 Associate members shall be persons engaged in paleontologic, petrographic or stratigraphic studies that have application to the geology of petroleum, who work or reside in the Gulf Coast province of the above mentioned states, and who are not members or associate members of the Society of Economic Paleontologists and Mineralogists. Associates shall enjoy all the privileges of membership, save that they shall not hold office. Election to membership in the Society of Economic Paleontologists and Mineralogists will automatically advance associates to members.

2.04 Charter members are those whose applications for membership were received before the first nomination of officers. They shall enjoy all the privileges of members and, hereinafter, are included in all references to "members."

2.05 The Council may elect as honorary members persons who have contributed distinguished service to the science of stratigraphy, paleontology or sedimentary petrology, especially as they relate to petroleum geology in the Gulf Coast. Honorary members shall not be required to pay dues.

2.05 The Council may elect as honorary members persons who have contributed distinguished service to the science of stratigraphy, paleontology or sedimentary petrology, especially as they relate to petroleum geology in the Gulf Coast. Honorary members shall not be required to pay dues.

2.06 Each candidate for membership shall submit to the Secretary an application on a form authorized by the Council for this purpose.

2.07 New members and associates enrolled after September 15 shall be considered as having paid their dues for the next calendar year.

**ARTICLE 3.
COUNCIL AND OFFICERS**

3.01 Executive authority of the corporation is vested in a board of directors known as the "Council" consisting of six members who are duly elected by the members, as follows: President, President-Elect, Vice-President, Secretary, Treasurer, and the most recently retired Past President.

3.02 The President shall discharge the usual duties of a president, as well as act as presiding officer at all meetings of the Section and Council. He shall appoint an Editor, Program Chairman, Committee Chairmen and Business Representatives.

3.03 The Vice-President shall assume the duties of the President in the case of the absence or disability of the latter. He shall also be Chairman of the Membership Committee and Chairman of the Employment Counseling Committee.

3.04 The Secretary shall keep records of the proceedings of the Section and a complete list of the membership. He shall attend to the preparation and mailing of notices, membership application blanks and other materials necessary to the business of the Section.

3.05 The Treasurer shall have custody of all funds of the Section. He shall keep account of the receipts and disbursements, and submit his account to the membership at the end of each year.

3.06 The Council shall consider all candidates for membership and pass on the qualifications of the applicants; shall have control and management of the affairs and funds of the Section; shall designate the time and place of the Annual Meeting.

3.07 The President and Vice-President shall not serve for more than one (1) year, except that if the Vice-President succeeds to the position of acting President, he may be elected to a full term as President.

3.08 In the event that neither the President nor Vice-President is available to serve as presiding officer of the Section, the immediate Past President shall assume the President's duties.

3.09 The President-Elect shall serve for one (1) year as such, and in the following year he shall assume the office of President. He shall have no administrative authority except as a member of the Council. He shall acquaint himself with all the details of the office of President and generally prepare himself to serve as President. He shall be responsible for the preparation of the annual meeting for the ensuing year.

3.10 A vacancy occurring in the offices of Vice-President, Secretary or Treasurer shall be filled by Council appointment.

3.11 A vacancy occurring in the office of President-Elect shall be filled by mail ballot by the membership through a special election called by the Council.

ARTICLE 4.
MEETINGS OF MEMBERS

4.01 The Section shall hold at least one stated meeting each year, which shall be known as the Annual Meeting. This meeting will usually be held in conjunction with the Annual Meeting of the Gulf Coast Association of Geological Societies.

4.02 The program for the Annual Meeting shall be arranged by the Program Chairman in conjunction with the Chairman designated by the Gulf Coast Association of Geological Societies to arrange for its own program. In general, it will be desirable that the contributions from members of the Section be included in the main program rather than being allotted to a separate session.

4.03 At the time of the Annual Meeting, a Business Meeting shall be held for the transaction of Section business.

ARTICLE 5.
AMENDMENT OF BYLAWS

5.01 These Bylaws may be amended by a two-thirds vote of returned mail ballots received by the Secretary sixty (60) days after proposal of amendments with provision for vote is mailed to the members. Any proposed amendments must have the approval of a majority of the Council before being submitted to the members.

5.02 A petition containing the signatures of twenty (20) active members is considered sufficient to bring before the Council a proposed change in the Bylaws. A majority vote of the Council is also considered sufficient to initiate a proposed change.

ARTICLE 6.
DUES

6.01 The fiscal year of the Section shall commence on October 1 and expire on September 30 of the following year.

6.02 The annual dues of the members and associates of the Section shall be four dollars (\$4.00). Penalty of fifty cents (.50) shall be assessed for late payments. The fifty cents (.50) late penalty shall be waived upon payment of dues for two more years.

6.03 A bill for dues shall be mailed to each member and associate before January 1 of each year. Members and Associates who have not paid their annual dues by April 1 shall be dropped from the membership rolls.

6.04 Members and Associates dropped for non-payment of dues may apply to the Council for reinstatement and be reinstated by majority vote of the Council.

6.05 Members of Associates may, at their discretion, pay their annual dues in advance for periods of up to five (5) years.

ARTICLE 7.
FINANCIAL PROCEDURE

7.01 No officer or member shall enter into contract or disburse any of the Section's funds, without the co-signature of a member of the Council. Disbursal of a sum in excess of Five Hundred Dollars (\$500.00) must be approved by a majority of the Council.

ARTICLE 8.
ELECTIONS

8.01 The President shall appoint two (2) nominating committees, instructing each committee to submit nominations for President-Elect, Vice-President, Secretary, and Treasurer. These nominations shall be in the Secretary's hands before July 15. If desired, the same person may be nominated by the two committees for the offices of Secretary and Treasurer, but the nominations of the first committee to file its report will have precedence in case of overlapping nominations, and the other committee shall then be requested to change its nomination. A candidate for office must be an active member and reside in the Gulf Coast at the time of his nomination.

8.02 Ballots containing the nominations for officers, arranged alphabetically under each office, shall be prepared by the Secretary and mailed to each member of the Section on or before July 15. The ballots received by the secretary before September 15 shall be counted by him. Receipt of a plurality of the votes cast for any office shall constitute election. In case of a tie vote, members of the Council shall cast one additional deciding vote.

8.03 Results of balloting shall be announced at the Annual Meeting, and the new officers shall enter upon duty at the adjournment of the Meeting.

ARTICLE 9.
PUBLICATIONS

9.01 The Section editor, appointed by the President, shall actively solicit papers from the Section membership for presentation at the Annual Meeting. He shall cooperate with the editor of the Gulf Coast Association of Geological Societies' TRANSACTIONS volume in preparing papers delivered at the meeting for publication in this volume. He shall cooperate with the editors of the Society of Economic Paleontologists and Mineralogists' journals by helping to arrange for publication in these periodicals of suitable papers which come to his attention.

9.02 Members of the section may purchase one copy of each Section publication at a discount of 20 percent off the advertised price.

ARTICLE 10.
BUSINESS REPRESENTATIVES

10.01 The President shall appoint one representative from each group of members in each local geological society affiliated with the Gulf Coast Association of Geological Societies and in other localities as needed. Each representative shall have an up-to-date list of the members residing in his vicinity. He will notify these members concerning any matters of Section policy which may be relayed to him by the President and shall have the authority to convene a meeting of these members to determine their views concerning Section affairs. He will report the results of such meetings to the President of the Section. He will cooperate with the Section editor in the soliciting of papers to be presented at the Annual Meeting and with the Chairman of the Membership Committee in recruiting new members for the Section.

ARTICLE 11.
AUDIT

11.01 The President shall appoint an Auditing Committee which shall review the accounts presented by Treasurer. The approval of the Treasurer's books by the committee shall be required before his final report will be accepted. The Treasurer may submit a provisional report at the Annual Meeting, and his final audit shall be accomplished not later than 30 days thereafter.

The Constitution of the GCS-SEPM was originally adopted
in 1954 and was amended in 1960, 1962, 1966,
1969, 1971, 1972, 1975, and 1981.

The Section was incorporated under the laws of the State of Texas
in 1981, and these Bylaws were adopted at that time in place
of the original Constitution and its amendments.

These Bylaws embody all of the provisions of the original
Constitution and its amendments.

GULF COAST SECTION — SEPM PAST OFFICERS

	PRESIDENT	VICE-PRESIDENT	SECRETARY	TREASURER
1953-1954	Stuart A. Levinson	Grove E. Murray	William H. Akers	Frank V. Stevensen
1954-1955	Charles W. Stuckey, Jr.	E.H. Rainwater	William H. Akers	Fred L. Smith, Jr.
1955-1956	E.H. Rainwater	Frank S. Westmoreland	Hugh A. Bernard	Eleanor T. Caldwell
1956-1957	Lloyd M. Pyeatt	J.O. Cole	H. Dillingham, Jr.	Eleanor T. Caldwell
1957-1958	J.O. Colle	Fred L. Smith, Jr.	Harold V. Andersen	William G. Parker
1958-1959	Marcus A. Hanna	Claude M. Quigley	Fred E. Smith	Bernard L. Hill, Jr.
1959-1960	David E. Pope	A.D. Ellis, Jr.	Gordon C. Munsey	H.A. Chun
1960-1961	Claude M. Quigley	Harold V. Andersen	E. Ann Butler	Edward Marks
1961-1962	Harold V. Andersen	Theodore D. Cook	Benjamin J. Petrusek	Albert D. Warren
1962-1963	Albert D. Warren	Ernest H. Horton	Blair S. Barrott	Henry H. Phillips
1963-1964	Lyman D. Toulmin	E. Ann Butler	Charles C. Albers	John E. Kilgore
1964-1965	Howard L. Tipsword	Benjamin J. Petrusek	D. Jeter Smith	Emmett R. Adams
1965-1966	John B. Dunlap, Jr.	John J.W. Rogers	M. Ray Bane	Charles B. Morris
1966-1967	Hubert C. Skinner	Richard P. Zingula	Gene Ross Kellough	Gene B. Martin
1967-1968	Benjamin J. Petrusek	Dan McGregor	Garrett Briggs	Herbert A. Elliot, Jr.
1968-1969	William A. Atlee	Edgar B. O'Quinn	James W. Fowler	William E. Steinkraus
1969-1970	Fred L. Smith, Jr.	Kenneth L. Loep	Robert K. Sylvester	C. Wylie Poag, Jr.
1970-1971	Jules Braunstein	Douglas E. Jones	Walter H. Trenchard	Robert N. Davids
				Gerald R. Stude
1971-1972	William W. Hay	William E. Steinkraus	Karl J. Koenig	Gerald R. Stude
1972-1973	C. Wylie Poag, Jr.	Emmett R. Adams	Gerald R. Stude	Joan B. Stough
1973-1974	Edward B. Picou, Jr.	Walter H. Trenchard	Lawrence C. Menconi	J. Loyd Tuttle, Jr.
1974-1975	Emmett R. Adams	Edward Marks	Herbert A. Elliott, Jr.	Doris M. Curtis
1975-1976	James L. Lamb	Lawrence C. Menconi	William S. Grubb	John L. Carney
1976-1977	Clifton A. Couture	Eleanor T. Caldwell	Sherwood W. Wise, Jr.	Joseph E. Boudreaux
1977-1978	Gerald R. Stude	William P.S. Ventress	Gary R. Roberson	George C. Esker, III
1978-1979	Willard P. Leutz	Bob F. Perkins	Walter P. Kessinger	Kenneth A. Hodgkinson
1979-1980	Gene B. Martin	John L. Carney	Mary Ann Rafle	Arthur S. Waterman
1980-1981	Bob F. Perkins	Don G. Bebout	Sheila C. Barnette	Ted Karmen
1981-1982	William P.S. Ventress	Kenneth A. Hodgkinson	Brian J. O'Neill	Kurt Geitzenauer

PUBLICATIONS

OF THE

GULF COAST ASSOCIATION OF GEOLOGICAL SOCIETIES

All GCAGS *Transactions* and a variety of other GCAGS publications are available. To facilitate your order, GCAGS will accept either Visa or Master Card in addition to checks for payment of all orders.

GCAGS TRANSACTIONS	Price
Volume 1 (1951) New Orleans	\$15.00
Volume 2 (1952) Corpus Christi	10.00
Volume 3 (1953) Shreveport	10.00
Volume 4 (1954) Houston	10.00
Volume 5 (1955) Biloxi	13.00
Volume 6 (1956) San Antonio	15.00
Volume 7 (1957) New Orleans	17.50
Volume 8 (1958) Corpus Christi	15.00
Volume 9 (1959) Houston	17.50
Volume 10 (1960) Biloxi	10.00
Volume 11 (1961) San Antonio	10.00
Volume 12 (1962) New Orleans	17.00
Volume 13 (1963) Shreveport	10.00
Volume 14 (1964) Corpus Christi	17.00
Volume 15 (1965) Houston	13.00
Volume 16 (1966) Lafayette	17.00
Volume 17 (1967) San Antonio	11.00
Volume 18 (1968) Jackson	10.00
Volume 19 (1969) Miami	10.00
Volume 20 (1970) Shreveport	10.00
Volume 21 (1971) New Orleans	13.00
Volume 22 (1972) Corpus Christi	13.00
Volume 23 (1973) Houston	15.00
Volume 24 (1974) Lafayette	17.50
Volume 25 (1975) Jackson	17.50
Volume 26 (1976) Shreveport	18.50
Volume 27 (1977) Austin	25.00
Volume 28 (1978) New Orleans	22.50
Volume 29 (1979) San Antonio	30.00
Volume 30 (1980) Lafayette	25.00
Volume 31 (1981) Corpus Christi	6.50
Supplement to Volume 31	30.00
Volume 31 and Supplement (combination price)	

GCAGS MAPS

Fault and Salt Map of South Louisiana 52" x 106" edited by W.E. Wallace, Jr. (1966)	\$20.00 rolled
Faults of South and Central Texas, Map compiled by Delos R. Tucker (1967)	1.50
Bathymetry of the Gulf of Mexico, Map of Elazar Uchupi (1967)	1.50
Lower Wilcox Map, Reprinted from Volume 17 (1967)	1.50

BIBLIOGRAPHIES AND INDEX OF GULF COAST GEOLOGY

	Price
Bibliography of Gulf Coast Geology (1970) Volumes 1 & 2 Set (edition for pre-1900 to 1968)	\$ 6.00
Bibliography of Gulf Coast Geology (1976) Volume 3 (edition for 1969-74)	4.00
Bibliography of Gulf Coast Geology (1982) Volume 4 (edition for 1975-1979)	10.00
Bibliography of Gulf Coast Geology Complete Set, Volumes 1 through 4 inclusive	17.50
Comprehensive Index of GCAGS publications (1966) Volume 1 (1950-1965)	2.50

SPECIAL GCAGS PUBLICATION SERIES

Readings in Gulf Coast Geology	
Volume 1. "Depositional Systems in the Gulf Coast." Compiled by Edward C. Roy, Jr. Eleven papers excerpted from GCAGS <i>Transactions</i> that focus on this subject. (December, 1980)	\$10.00
Volume 2. "Petroleum Geology of the Cenozoic of the Central Gulf Coast, with Special Emphasis on the Miocene." Compiled by Raymond W. Stephens. Ten papers excerpted from GCAGS <i>Transactions</i> that focus on this subject. (September, 1981)	10.00
Volume 3. "Biostratigraphy and Paleocology of Gulf Coast Cenozoic Foraminifera." Compiled by Samuel P. Ellison, Jr. Fourteen papers excerpted from GCAGS <i>Transactions</i> that focus on this subject (May, 1982)	10.00

Total of Publications Requested	\$ _____
Texas Residents: Include 5% Sales Tax	\$ _____
Foreign Orders: Add \$2.00/Volume	\$ _____
TOTAL	\$ _____

ALL ORDERS MUST BE PREPAID.
ENCLOSE CHECK OR CREDIT CARD INFORMATION.
Make check payable to **Earth Enterprises - GCAGS**
Mail to: **P.O. Box 672**

Austin, TX 78767
Telephone: **521/345-3007**

Master Card
 Visa

Card Account
Number Here Card Expiration _____

--	--	--	--	--	--	--	--	--	--	--	--	--	--	--	--	--	--	--	--

Signature _____

SHIPPING INFORMATION:

Name _____
Address _____
City/State _____ Zip Code _____

(PRICES SUBJECT TO CURRENT INVENTORY)

**PUBLICATIONS OF THE GULF COAST SECTION
SOCIETY OF ECONOMIC PALEONTOLOGISTS
AND MINERALOGISTS**

TYPE LOCALITIES OF THE GULF COAST

Unit II
Unit III

FIELD TRIP GUIDEBOOKS

Middle Eocene, Houston Co., Texas, 1961
Stratigraphic Study of Pleistocene to
Middle Eocene, Houston, Texas, 1963
Geological Field Guide to Neogene Sections
in Jamaica, West Indies, 1969
Guatemala (including maps of Mayan ruins), 1974
Lower Cretaceous in Moffat Mound Area Near Lake Belton,
Bell Co., Texas, 1979. (reprint of 1977 edition)
Middle Eocene Coast Plain and Nearshore Deposits of East
Texas: A Field Guide to the Queen City Formation and
Related Papers, 1980
Deltaic Sedimentation on the Louisiana Coast; A Collection
of Papers Prepared in Connection with the
GCS-SEPM Field Trip, 1982

SPECIAL VOLUMES

Proceedings of Symposium on Calcareous Nannofossils, 1973
Geology of the Woodbine and Tuscaloosa Formations, Program
and Expanded Abstracts with Illustrations, First Annual
Conference, 1980
Recognition of Shallow-Water Versus Deep-Water Sedimentary Facies
in Growth-Structure-Affected Formations of the Gulf Coast
Basin, Program and Expanded Abstracts with Illustrations,
Second Annual Research Conference, 1981

Available from EARTH ENTERPRISES. For prices and availability contact:

EARTH ENTERPRISES
P.O. Box 672
Austin, Texas 78767
(512) 345-3007